

CREC Resource Group

The redesign and reorganization of CREC's sale of service divisions

CREC Council, October 17, 2018

www.crec.org

 **CREC**
Excellence in Education

History

- ❖ 2016: Charged a think tank of employees with providing recommendations for the long-term sustainability of the sale of service divisions, **resulting in two primary recommendations:**
 - 1) Reorganize sale of service divisions/departments into a single division
 - 2) Create a centralized support structure for the new division (including research & development, marketing, sales, and administrative support)
- ❖ 2017: Created a Steering Committee to lead the planning and execution of the consolidation of three service divisions (Technical Assistance and Brokering Services; Teaching & Learning; and Data Analysis, Research and Technology), plus the sales-based components of the Community Education division
- ❖ 2018: Hired Division Director, Amy Karwan, and launched new division: CREC Resource Group

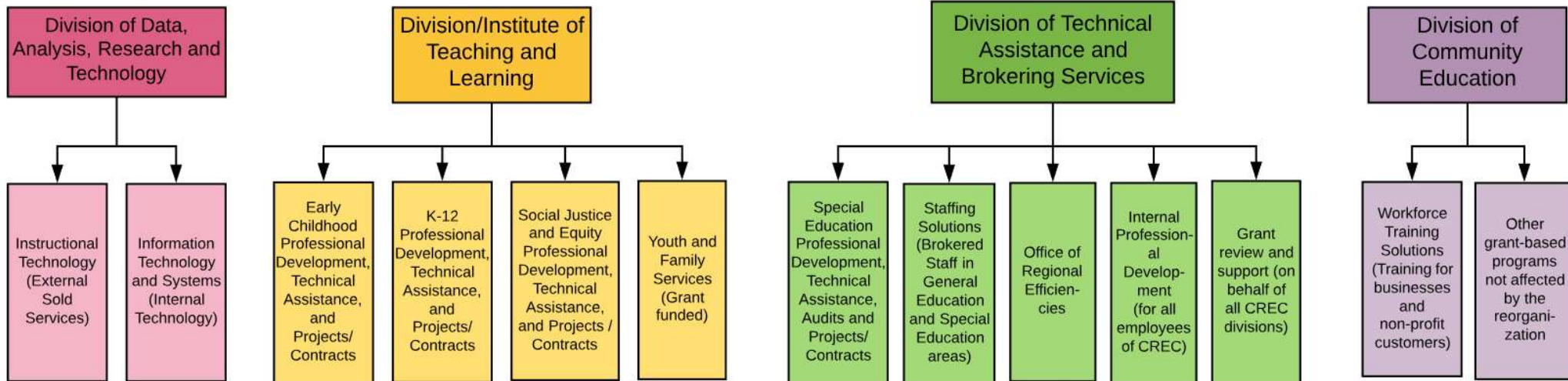
Goal of the Reorganization

When this transformation is complete, we will have a coordinated, sustainable division that supports the mission of the agency and the needs of our customers with high-quality products and services delivered by expert staff.

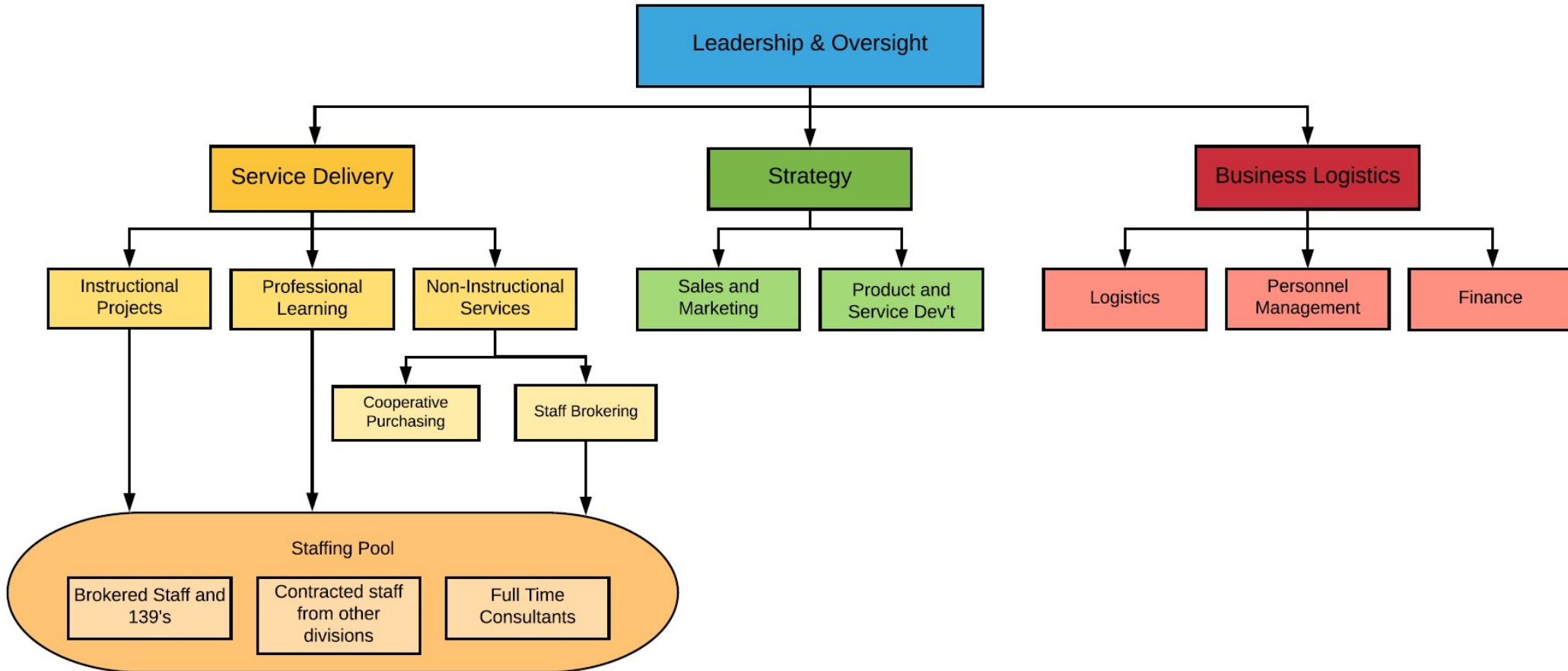
Intended Outcomes of the Reorganization

- ❖ To improve relationships with and support for districts.
- ❖ To be more responsive to the needs of districts and customers.
- ❖ To streamline inefficient and overlapping internal systems.
- ❖ To improve communication and relationships between internal departments.
- ❖ To eliminate the duplication of services and programs.
- ❖ To update the systems used for contracting, budgeting, and projecting and tracking sales.
- ❖ To improve sales, marketing, and advertising.

Division Structure Before Reorganizing



Division Functional Structure After Reorganizing



Introducing the CREC Resource Group

We provide customized, cost-effective solutions to our partners in education—district and school leaders—along with students, corporations, non-profits, and professionals. Our extensive experience in education, regional collaboration, and operations makes CREC Resource Group a trusted partner to deliver and implement innovative strategies that result in improved practice and positive outcomes. We offer training, coaching, program audits, staffing, technical assistance, and more to address the current and future needs of our partners.

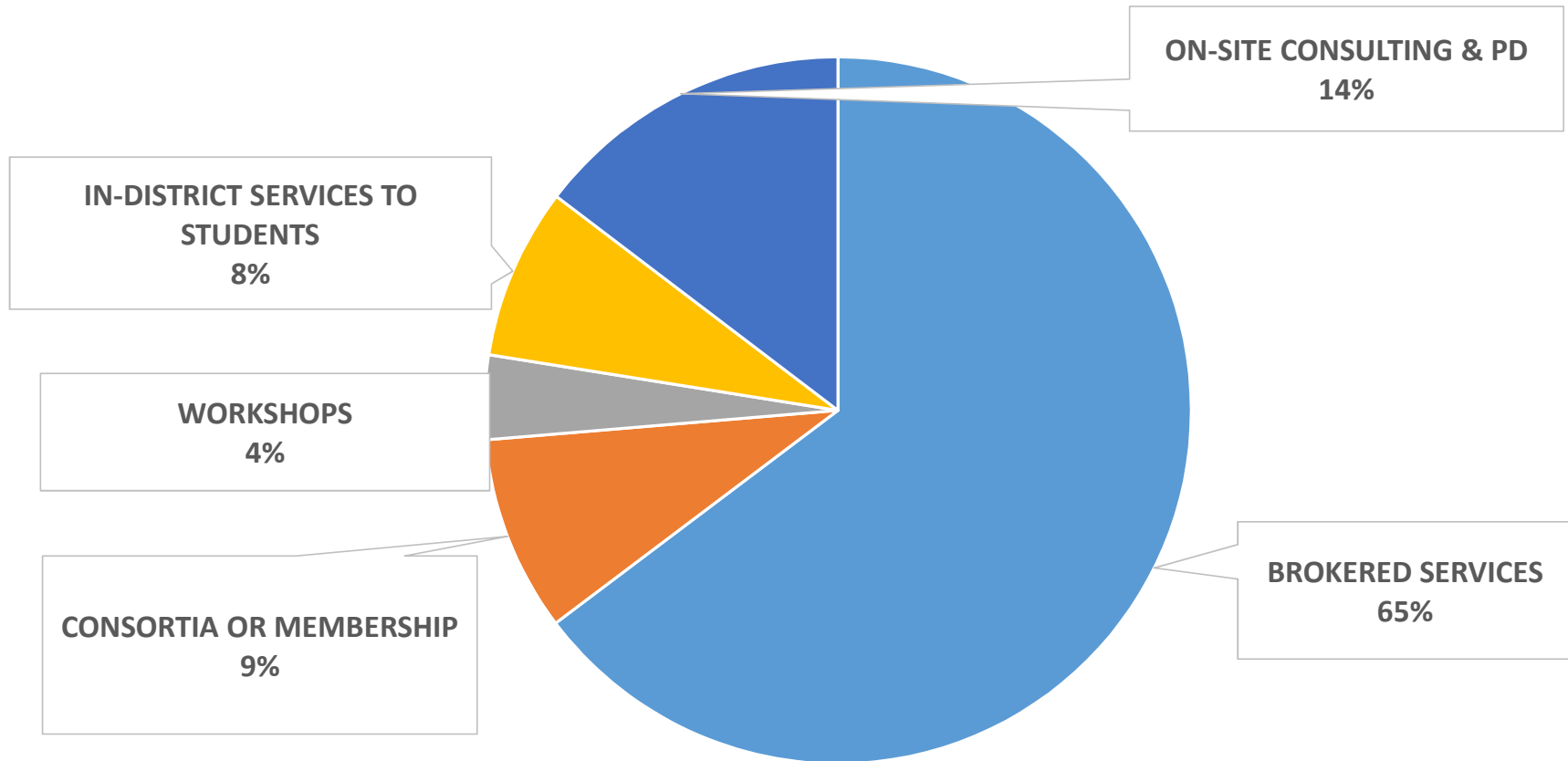
Areas of Expertise

- ❖ English Language Arts, Math, Science, Social Studies, World Languages
- ❖ English Learners
- ❖ Special Education
- ❖ Assistive Technology
- ❖ Speech and Language
- ❖ Equity
- ❖ Early Childhood
- ❖ Montessori
- ❖ Technology
- ❖ Instructional Coaching
- ❖ Positive Behavioral Interventions and Supports
- ❖ Family Engagement
- ❖ Regional Efficiencies

Types of Services

- ❖ Consulting and Technical Assistance
- ❖ Audits and Program Evaluations
- ❖ Workshops and Conferences
- ❖ Consortia
- ❖ Cooperative Purchasing
- ❖ Councils
- ❖ Online Learning Modules
- ❖ Staffing
- ❖ Student Evaluations

2018 CREC District Services



Spotlight: Next Generation Science Standards



Premier provider of [Next Generation Science Standards curriculum](#), implementation, assessments, and in-district support. CREC prepares your teachers to expertly deliver phenomenon-based and story-lined units, lessons plans and supporting materials.

Spotlight: Staffing Solutions & Evaluation Services

Direct Services

- ✿ Administrators
- ✿ Behavior Specialists
- ✿ Interpreters/ Sign Language
- ✿ Paraprofessionals
- ✿ Psychologists
- ✿ Special Education Teachers
- ✿ Speech & Language
- ✿ Tutors

Student Assessments

- ✿ Autism screening
- ✿ Assistive Technology
- ✿ Augmentative/Alternative Communication
- ✿ Behavior
- ✿ Early Childhood
- ✿ Psychological
- ✿ Speech/Language
- ✿ Vocational/Transitional

Spotlight: Cooperative Purchasing



Save money and time by shopping online through The [Marketplace](#). Purchase supplies through our pre-negotiated contracts. Our marketplace brings you the ease and convenience of ordering from multiple vendors from one site, while knowing that the contracts you are purchasing from have been chosen according to approved purchasing regulations.

Customer Service Enhancements

- ❖ Comprehensive view of school and district needs
- ❖ Proactive partnership
- ❖ Consistent quality of services and products
- ❖ Competitive pricing
- ❖ Support for planning and implementation

Thank you!

services@crec.org

crec.org/services

860-524-4040

Amy Karwan: akarwan@crec.org

Julia Winer: jwiner@crec.org

www.crec.org