

Technical Assistance and Brokering Services



Positive Behavioral Interventions and Supports (PBIS) Booster Sessions

**Enrollment Requires
a Minimum of Two
Participants from
Each School**

**[Click Here](#)
To register**

For more information:

Please contact Mary Janet Candeias
at 860-524-4022
or mcandeias@crec.org.

Professional Development

Cancellation/Delay Information:

On the day of a CREC PD event,
please call CREC at
860-509-3700 after 6:30 a.m. for
cancellation or delay information.



PBIS Classroom Systems

This workshop reviews what is involved and what should be considered when developing classroom supports within a PBIS framework. Content includes how to organize supports for classroom teachers and classroom domains. The five evidenced-based practices of classroom management will be discussed and a tool for teacher self-management will be reviewed. Teams will plan on how they will work with staff to:

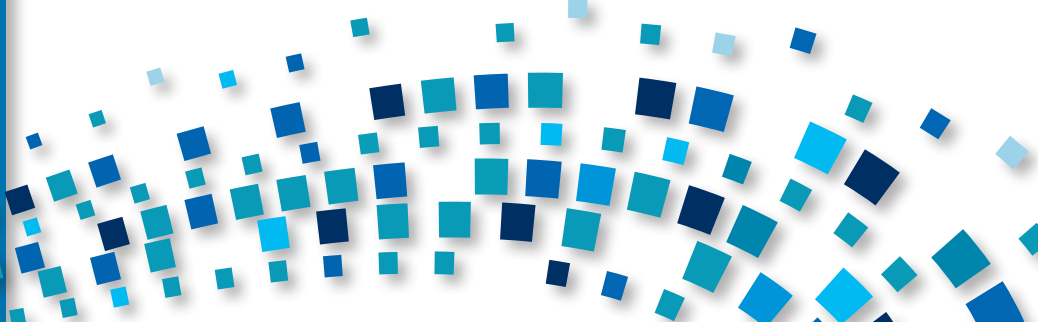
- Maximize structure in the classroom.
- Post, teach, review, monitor, and reinforce a small number of positively stated expectations.
- Actively engage students in observable ways.
- Establish a continuum of strategies to acknowledge appropriate behavior.
- Establish a continuum of strategies to respond to inappropriate behavior.

WHEN: October 15, 2014 9 – 11:30 a.m.

WHERE: Room 202, CREC Central
111 Charter Oak Avenue, Hartford, CT 06106

COST: \$50 per person

Please see reverse side.



PBIS Sustainability

Why does it seem so hard to sustain school initiatives? When grant funding ends and champions move on, how do we keep PBIS strong in our buildings? This workshop will provide the research findings and practical strategies to overcome barriers to sustaining PBIS. Teams will:

- Assess the structures in place for sustainability.
- Create an action plan based on the assessment.
- Problem solve areas of concern that impact sustainability.

WHEN: December 11, 2014 9 – 11:30 a.m.

SNOW DATE: December 22, 2014

WHERE: Room 202, CREC Central
111 Charter Oak Avenue, Hartford, CT 06106

COST: \$50 per person

PBIS Tier 2/3

This workshop will describe how all tiers need to be linked and layered with a specific focus on Tier 2/3 development. Examples of how tools and interventions can be applied to ensure the rapid and effective delivery of higher tiered interventions by building on a solid Tier 1 foundation will be provided. Teams will:

- Identify current systems in place and areas of improvement.
- Identify current practices in place and areas for improvement.
- Review data decision rules.
- Utilize data for decision making.

WHEN: February 4, 2015 9 – 11:30 a.m.

SNOW DATE: February 25, 2015

WHERE: Council Room, CREC Central
111 Charter Oak Avenue, Hartford, CT 06106

COST: \$50 per person

PBIS Data-Based Action Planning

Teams will be guided through the process of analyzing and summarizing data for the purpose of action planning. Teams need to review their data, systems and practices on an ongoing basis to meet the needs of their students. The PBIS trainer will provide support and guidance in developing the plan. Teams will:

- Define specific problem behaviors utilizing discipline data.
- Identify specific actions that will be taken to address problem behaviors.
- Complete assessments of Tier, 1, 2 and 3 action plan.

WHEN: May 13, 2015 9 – 11:30 a.m.

WHERE: Council Room, CREC Central
111 Charter Oak Avenue, Hartford, CT 06106

COST: \$50 per person

**Enrollment Requires
a Minimum of Two
Participants from
Each School**

To register:
Click on Title at Left

For more information:
Please contact Mary Janet Candeias
at 860-524-4022
or mcandeias@crec.org

**Professional Development
Cancellation/Delay Information:**
On the day of a CREC PD event,
please call CREC at 860-509-3700
after 6:30 a.m. for cancellation or
delay information.