

Annual Report

2018 – 2019







EXCELLENCE

in

EDUCATION

4	Mission, Vision, & Core Values
5	Executive Director's Letter
6	CREC at a Glance
7	How CREC Sets Priorities
8	Expect Excellence
10	Act with Courage
12	Demand Equity
14	Embrace Collaboration
16	CREC Foundation
23	Organization Chart
24	Budget Statement
25	Projected Budget Statement
26	Governance
27	Services Matrix

Mission

Equity, excellence, and success for all, through high-quality educational services.

Core Values



Expect Excellence
Act with Courage
Demand Equity
Embrace Collaboration

Vision

- ▶ To become our member districts' primary resource to facilitate collaborative efforts that create equitable and sustainable educational opportunities, assist in maximizing district and regional resources, and advance successful educational practices for all learners at all ages.

Goals

- ▶ CREC will lead the region's efforts to increase the number of students who demonstrate preparedness for college or careers.
- ▶ CREC will be an expert and a partner in the development and implementation of innovative, research-driven programs and services to support children, families, adults, and communities.
- ▶ CREC will be an efficient, accountable, and transparent organization.
- ▶ CREC will be an organization that values and develops its employees.
- ▶ CREC will be the convener of regional conversations to share, analyze, and disseminate data for the purpose of assisting with educational planning at the local and regional level.
- ▶ CREC will work collaboratively to develop sustainable and equitable school choice programs in the region.
- ▶ CREC will work to eliminate bias and implement equitable practices, policies, and structures that lead to successful outcomes.

Executive Director's Letter

Dear Friends,

As I complete my fourth year as Executive Director, I am humbled by what this agency accomplishes each year. The cherished relationships I have personally built throughout the region with so many of our partners pale in comparison to the multitude of relationships our CREC staff have with the children and families served by our programs. As an agency, we have the programs and resources to support growth and success from birth to adulthood. I am proud to say that CREC had a very successful 2018-19. I hope you enjoy reviewing that success in our Annual Report.

Despite our successes, we were not immune to the fiscal challenges that everyone in the region and across the state have been feeling in the past few years. The financial uncertainty facing so many vital programs made meeting the challenge of our mission difficult. However, with the support of CREC members, education leaders, and colleagues from around the region, along with CREC's leadership, we were able to achieve the first increase in state support for magnet school tuition since 2010-11. Although small, that increase is a testament to a core value we hold dear—Embrace Collaboration. Together, we helped, even at a moderate level, alleviate some of the fiscal pressures around magnet school funding, which ultimately means more resources for all children in the region.

This past year also included hard work by all six of Connecticut's RESC partners to strengthen our alliance. Not only creating a strong voice in the state championing educational issues, but understanding that together, the RESC Alliance can offer a broader range of services to help all Connecticut school districts. Along with traditional services such as professional development, regional cooperatives, and operating magnet schools and student service programs, we helped deliver and support special education services on behalf of the State Department of Education.

Finally, we continue to advocate for social justice in all of our work. We are so proud to call Connecticut's Kid Governor, Ella Briggs, one of our own. Ella was a fifth-grader at CREC Ana Grace Academy of the Arts last year. CREC has led the way in Minority Teacher Recruitment efforts and created a Teacher Residency Program that will place up to a dozen teachers in CREC Magnet School classrooms in 2020.

CREC has always been, and will continue to be, a place where innovation leads the way. While there are perpetual concerns and challenges when it comes to funding, CREC finds ways to let nothing impede our ability to achieve desired outcomes. CREC is an agency where equity, excellence, and high-quality educational services are not just words in our mission statement but the things we do best.

Sincerely,



Greg J. Florio, Ed.D.



Magnet
school
students
8,390



Served
5,227
students with
disabilities

2,103 Employees



450
professional
development
workshops with
12,415
participants



CREC at a Glance



Students served
in CREC Student
Services programs

3,346



CREC
Transportation
Solutions traveled

13.6
million miles

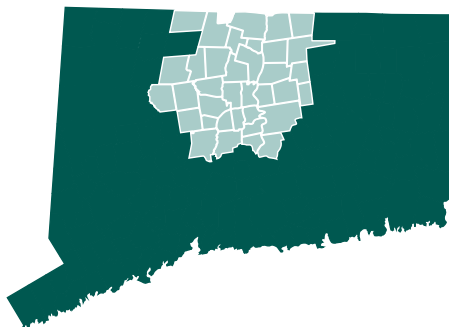


2,340
students in
Open Choice
28 among
towns

35 Member Districts

Avon, Berlin, Bloomfield, Bolton, Bristol, Canton, Cromwell, East Granby, East Hartford, East Windsor, Ellington, Enfield, Farmington, Glastonbury, Granby, Hartford, Hartland, Manchester, New Britain, New Hartford, Newington, Plainville, Portland, Region 10 (Burlington & Harwinton), Rocky Hill, Simsbury, Somers, Southington, South Windsor, Suffield, Vernon, West Hartford, Wethersfield, Windsor, and Windsor Locks

129 **Abc**
adult learners



How CREC Sets Priorities

CREC works closely with many partners to ensure that our agency's priorities and our programs and services respond to the growing and ever-changing needs of our varied clientele. CREC works diligently to listen to and probe our partners and clients for understanding and perspective. During 2018-2019, CREC continued to rely on feedback from:

- ▶ Advisory committees that help set program-specific priorities with direct service programs
- ▶ CREC's Board of Directors and the CREC Council, representing Board of Education members from urban, suburban, and rural districts, meet monthly to discuss problems affecting education in our region and encourage CREC to pursue an active role in providing high-quality, cost-effective solutions
- ▶ Ongoing meetings held with the Hartford Area Superintendents' Association, curriculum directors, special education directors, personnel directors, Connecticut Association of School Business Officials, Connecticut Association of Boards of Education, and meetings with the State's Commissioner of Education
- ▶ Needs assessments and planning documents from state agencies as they reflect the needs of the capital region
- ▶ The strategic planning committees of organizations, primarily the Connecticut State Department of Education and the Capitol Region Partnership and its member agencies
- ▶ Regular meetings with other regional service agencies to assess needs and discuss the ways those needs can be met through cooperative efforts
- ▶ All internal divisions and programs through an ongoing, comprehensive, and collaborative strategic planning process that evaluates the changes and growth in demand for services
- ▶ Stakeholder surveys and program evaluations that gather information about the targeted needs of our clients, the accessibility of our programs, and the quality of our services

Information from these and other sources is analyzed and evaluated by CREC's leadership. CREC's cross-divisional internal staff leadership team studies emerging needs and examines the interdepartmental strengths which could be matched to meet those needs. The results are shared with the team of CREC program managers. Strategies are then devised for how to implement the identified services. Feedback, flexibility, and responsiveness are key components to our success.

Actual Revenue
\$318,102,400

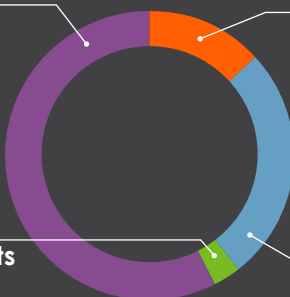
57.4%
State Grants
\$182,638,767

2.99%
Federal Grants
\$9,504,713

13.3%
Other LEAs & Agencies*
\$42,278,373

**Includes sales outside CREC districts, sales to individuals, contracts to state agencies, and other sales*

26.31%
Member Districts
\$83,680,547



Expect Excellence



▲ Students at CREC UHMS singing a song to celebrate their 2018 National Blue Ribbon School honor

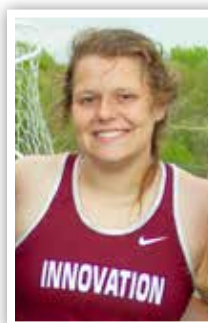


▲ Innovation Robotics Team celebrates their championship

CREC's first Core Value expect excellence was on display all over our programs in 2018-19, but excellence was more than just an expectation at one school—it was a way of life. CREC Academy of Science and Innovation in New Britain's east wing, across from the doors to the gymnasium, is lined with glass display cases full of artwork and student achievements, but they will need to clear space, or build new ones entirely, to fit the trophies they amassed in the last school year for a variety of extracurricular activities:

- ▶ The Innovation Ravens Boys Basketball team became the first CREC athletic program to win a State Championship, defeating Old Lyme in the Division V final at Mohegan Sun in March. The Ravens went 17-2 on the season. Junior L.J. Hazelwood and Senior Lenny Okonya were named to the CIAC All-State team, and Okonya was one of only ten students awarded with Academic All-State honors.

- ▶ Innovation's brilliant team won the world championship for Robotics Innovation at the VEX Robotics championship in Louisville, Kentucky in April.
- ▶ Morgan Sartor, a senior thrower on the Innovation track team, finished 32nd in the country at the High School National Championships for the hammer throw in Greensboro, North Carolina in June. Sartor's throw of 139 feet nearly doubled her personal best from her junior year.



◀ Morgan Sartor finished 32nd in the country for the high school hammer throw



▲ CREC Community Education's Medical Office Assistant education program



▲ CREC MMS's History Day team with Representative John Lewis



▲ CREC Academy of Science and Innovation, CIAC Division V Boys Basketball State Champions



▲ Jeff Sidewater was named Director of the Year by the School Nutrition Association of Connecticut

Many other CREC employees, students, schools, and programs reached new heights of excellence last year as well:

- ▶ In September, CREC University of Hartford Magnet School earned recognition as a 2018 National Blue Ribbon School for closing the achievement gap by the U.S. Department of Education.
- ▶ CREC's Transition to Employment Services program, part of the division of Community Education, partnered with Manchester Community College to provide Medical Office Assistant education programs; and their partnership with Hartford Hospital provide internship opportunities to the Medical Office Assistant students, which helps them on their path to employment.
- ▶ CREC Greater Hartford Academy of the Arts alum Tre Frazier earned the role of George Washington in the traveling cast of the Tony Award-winning Broadway Musical *Hamilton*.
- ▶ CREC Construction Services completed a long renovation at Haddam Killingworth High School which included a roof replacement, new internal and external LED lighting, a new boiler, and a renovated auditorium.



- ▶ CREC Montessori Magnet School's team placed first in the Hartford Region's History Day contest and then finished second overall in the State. They were invited to the National History Day Contest at the University of Maryland and presented their entry to a panel of judges including U.S. Congressman John Lewis.
- ▶ In April, CREC's Director of Food Services, Jeff Sidewater, was named Director of the Year by the School Nutrition Association of Connecticut (SNACT). Sidewater was lauded by his peers for working with state and federal legislators to advocate for funding and regulatory changes for all school nutrition programs.
- ▶ CREC Schools students represented well again at the State Invention Convention, with 19 students receiving "Recognized Inventor" honors. Many students represented CREC in May at the National Invention Convention in Dearborn, Michigan. The students' trip to Michigan was partially funded by the CREC Foundation through an innovation grant.

Act with Courage



▲ CREC Ana Grace Academy of the Arts Elementary School's Ella Briggs hearing she was elected CT Kid Governor for the first time



▲ CREC Impact Academy students "doing high school differently"

The most courageous act of any CREC community member in the 2018-19 school year may have been performed by CREC Ana Grace Academy of the Arts Elementary School fifth-grader Ella Briggs. Briggs ran a statewide campaign for CT Kid Governor and bested the competition, winning an election in November with over 6,400 votes in total. Briggs' campaign centered around LGBTQI+ rights in schools and her election served as proof that the students of CT stood behind her.

Connecticut's Kid Governor is a statewide civics program for fifth graders created by the Connecticut Public Affairs Network in 2015. The program offers each school in Connecticut the opportunity to enter one student candidate into a statewide election. All fifth graders in the State are eligible to vote. Briggs' campaign speech, a testament to her courage, began, "I am a proud part of the LGBTQI+ community and I want to make youth programs all around the state,

make school clubs, and help with kids who were kicked out of their homes. Together we can make Connecticut a little bit more colorful. With your vote, we can make a stand, make a change, and make a difference. Vote Ella, Love is Love." The announcement that Briggs had won came during a school-wide assembly at the school in Avon in late November. Kid Governor officials surprised students with a video announcement from News Channel 8.

The Hartford Gay Men's Chorus performed for the students—their first time ever performing in a school. CREC Administration, representatives from True Colors, State Senator Douglas McCrory (CREC's Director of Family Engagement), and State Representative Jeff Currey were in attendance. Senator McCrory and Representative Currey each presented citations to Briggs from the State, and Currey presented her with a pin proclaiming her part of Connecticut's LGBTQI+ Caucus.



▲ ALICE training ensures safety and security of staff and students



▲ Students in CREC Transition to Employment Services diligently working

Other examples of courage around CREC during 2018-2019 include:

- ▶ CREC Security embraced the ALICE program to train staff, administrators, and families to quickly and effectively assess threats in CREC facilities. ALICE stands for alert, lockdown, inform, counter, and evacuate, and empowers staff to make decisions on any, some, or all of those five actions to respond to potential threats, as opposed to outdated, linear protocols that do not adapt to different situations. These trainings can be emotionally evocative, and just participating takes courage on the part of CREC staff to learn these proactive measures that can ensure the safety and security of themselves and their students.
- ▶ Transition to Employment Services also fostered and maintained a partnership with the John J. Driscoll United Labor Agency of Hartford. A most giving partner, United Labor donated coats, hats, gloves, Thanksgiving dinner, Holiday toys, and other goods to families that take advantage of CREC Community Education services.



▲ Impact Academy engages students as co-creators of a welcoming and flexible learning community that prioritizes positive relationships, experiential learning, and community connections.

Demand Equity



◀ The CREC Teacher Residency Program residents, master teachers, and CREC Magnet Schools Administrators



Equity is always at the forefront of CREC's work, but last year was particularly productive in this realm. The most impactful of all the equity-focused achievements for CREC was the State's approval of the CREC Teacher Residency Program as a revolutionary new means of minority teacher recruitment, certification, and retention. Twelve residents chosen from the applicant pool were assigned to master teachers in CREC schools and began their 14-month road to elementary certification starting in June 2019 with a six-week intensive summer course to prepare them for the year.

To encourage minority applicants, preference was given to graduates of Hartford Schools, CREC Schools, and the Hartford Region Open Choice Program. Residents are each paid \$32,000 per year, with benefits, to be mentored by their master teacher for one year. Residents are then guaranteed a full-time classroom teaching positions in the second school year upon completion of the certification requirements. CREC's idea through this program is to prioritize minority candidates' potential to work with diverse students and minimizes barriers to traditional certification program admission.

CREC's mission and vision stress the need for equity in the Hartford Region and globally. Some other examples of CREC's equity-focused work last year include:

- ▶ The CREC Schools adopted a district-wide statement of diversity and inclusion, now displayed prominently in all CREC facilities:

Capitol Region Education Council (CREC) Magnet Schools is an intentionally diverse social justice organization whose members work to acknowledge, respect, and empathize with people of all different identifiers, such as race, socioeconomic status, gender identity and expression, education, age, ability, ethnicity, culture, sexual orientation, language, nationality, and religion.

In accordance with CREC's mission of equity, excellence, and success for all through high-quality educational services, our staff and students commit to participate in and support ongoing equity and inclusion programming through curricular and co-curricular offerings, professional learning, and local and national partnerships. Moreover, CREC Magnet Schools staff and students strive to understand and confront the symptoms and causes of systematic oppression—ranging from implicit biases to microaggressions to discriminatory policies, practices and traditions—that benefit privileged groups.

*While at CREC Magnet Schools, staff and students commit to affirm and honor the lived experiences of others, to willingly challenge inherited beliefs and ideologies, and consequently learn, grow, and serve.**

*CREC would like to acknowledge The Taft School for inspiring some of the language used in this statement.

- ▶ The CREC Schools partnered with the Center for School Change to provide staff with targeted, guided support in examining practices and policies as they related to equity.
- ▶ The Hartford Region Open Choice Program completed multiple home visits to Hartford students with Ellington and Farmington educators during the summer of 2018 to build relationships with new and returning students and their families. In fall, both districts presented in the Open Choice Dine & Discuss series about family engagement strategies. Creative approaches shared included home visits with CREC and school-based staff, student-run assemblies, student-led parent conferences, and calling parents early in the year to share positive reflections. Open Choice stakeholders find that these strategies lead to increased attendance and higher parental participation in conferences and events.
- ▶ At the three-day Open Choice Leadership Institute in October, educators from Ellington, Enfield, Farmington, Portland, Simsbury, South Windsor, and Tolland shared equity-focused successes and challenges, assessed their schools, and developed action plans. They also engaged in discussions with parents and alumni of the program. On a bus tour, they visited Hartford neighborhoods, learned about the city's many assets, and gained a better understanding of Open Choice students and families.
- ▶ CREC Food Services worked with the CSDE to develop and implement free and reduced-price meal direct certification for Medicaid case students. The implementation increased certified students from 31% to almost 45% and qualified over 1,300 additional students for free or reduced meals to drastically reduce the financial burden on families
- ▶ CREC Transportation Solutions strengthened their communication efforts to families by hosting information sessions to get families acclimated with the system and processes and connect with transportation staff. They also donated services to Mystic Aquarium for children and families receiving Connecticut Supplemental Nutrition Assistance Program (SNAP) benefits.



▲ CREC Food Services at a special springtime barbecue at CREC UHMS



▲ Open Choice Leadership Institute bus tour



▲ Volunteers from CREC Transportation at the Back to School Block Party

Embrace Collaboration



▲ *Open Choice family engagement participants*

CREC's defined concentration on building relationships in 2018-19 was a direct reflection of the commitment to this particular Core Value. In the CREC Schools and other programs like Open Choice and Student Services, building relationships to engage parents and families in their students' education was a primary focus.

Last year, CREC placed a Family and Community Engagement Coordinator in each school and one in the Hartford Region Open Choice Program's office. These coordinators' sole purpose is to foster a welcoming atmosphere for families, community organizations, and other external partners so that they all feel connected to the school and the CREC mission. With students in CREC schools coming from over 35 different towns in Connecticut, it can be easy for families to lose the connection to their school if the actual building is not close to home. The coordinators made sure to familiarize themselves with all families and make themselves the central resource for disengaged students and families in need.

Family Engagement was a collaborative focus across all of CREC last year, with Community Education and the CREC Resource Group making efforts in the area as well. CREC Resource Group's



▲ *Minority Teacher Recruitment Fair, hosted by the CREC Resource Group*

Guiding Partnership with Schools website, guidingpartnerships.com, is an online hub of self-assessments, implementation plans, and training resources for Family Engagement practitioners working to deepen the level of involvement of families in the educational process.

In September, CREC Community Education was awarded a grant for \$4.9 million from the U.S. Department of Education to fund and design the establishment of a Statewide Family Engagement Center. The five-year grant is a collaboration between CREC, the African Caribbean American Parents of Children with Disabilities (AFCAMP), the Connecticut Parent Advocacy Center (CPAC), the Connecticut State Department of Education (CSDE), and the State Education Resource Center (SERC). The grant will enable partners to work with communities across the state, providing resources and promoting the engagement of parents, families, students, and other community stakeholders to improve students' academic, social, and emotional development.



▲ Children helped by CREC Student Services



▲ CREC Transportation led the creation of STAR



▲ A CREC Community Education workshop

Other highlights in the area of collaboration during 2018-2019 include:

- ▶ The Magnet Schools Central Office fostered relationships with staff, students, and parents through the formation of senates. Once a month, the Parent Senate, Staff Senate, and Student Senate met with the Superintendent and other Central Office staff to discuss issues and collectively create solutions.
- ▶ CREC Student Services collaborated with Community Health Resources (CHR) to provide mental health services in five schools and programs, to create a lower-cost alternative to school-based health centers. CHR also took over management of the mental health clinic on the CREC John J. Allison Jr. Polaris Center campus to provide comprehensive mental health services to students and the community.
- ▶ Student Services and the CREC Resource Group also worked closely with CSDE and the RESC Alliance on several special education and early childhood projects. One highlight with the RESC Alliance was a School Avoidance Project that resulted in a free website of resources for tiered interventions to be used by the RESCs and member districts.
- ▶ CREC Community Education continued its partnership with CSDE to offer comprehensive professional development opportunities for 665 Career and Technical Education educators.
- ▶ CREC became the largest implementer of Cognitive Behavioral Interventions for Trauma in Schools (CBITS) in Connecticut by working with the Child Health and Development Institute for training and technical assistance.
- ▶ The Fourth Annual CREC Back to School Block Party in August invited over 35 community organizations to help hand out 1,200 free backpacks to Hartford area students.
- ▶ CREC Transportation led the creation of the School Transportation Advocacy and Resource (STAR) association, a collaborative of school transportation coordinators in the Greater Hartford area. The purpose of the association is for transportation coordinators to support each other with school transportation-related topics.
- ▶ CREC Food Services worked with State and Federal Legislators to advocate for funding and regulatory changes for all School Nutrition Programs.
- ▶ CREC Resource Group hosted their Minority Teacher Recruitment Fair again in March, partnering with community organizations and area districts to bring equity to their hiring practices.
- ▶ The CREC Testing Center, managed by Community Education, in partnership with Pearson VUE and Educational Testing Services (ETS®), served 865 clients statewide for tests like Praxis and ParaPro Assessment.

The CREC Foundation had another successful year building relationships with new and continuing donors desiring to contribute to providing education and support to the children and families of the Hartford Region.

Last year, the CREC Foundation accepted applications and funded internal CREC projects through Innovation Grants made possible through the generosity of CREC Foundation donors. The money supported educational projects and initiatives that directly benefited students and enhanced their experience in CREC schools and programs.

Applications for these grants are judged on their creativity, originality, and how well they align with CREC's curricular goals to support and impact students learning.

One initiative funded by CREC Foundation Innovation Grants was a trip to the 2019 Henry Ford National Invention Convention in Dearborn, Michigan for a large group of CREC middle school students from several schools. These students were invited to display their groundbreaking ideas and showcase their ingenuity and resolve on a national stage, and it may not have been possible without the CREC Foundation.



▲ CREC middle school students at the 2019 Henry Ford National Invention Convention



▲ First Annual CREC Academic Contributions of Excellence (ACE) Awards



▲ Over 180 awards were given out to CREC students at the CREC ACE Awards in May



Another Innovation Grant-funded event was the First Annual Academic Contributions of Excellence (ACE) awards, held at Hartford's Theatre of the Performing Arts in May. At the celebration, CREC leadership, school staff, parents, guardians, and students came together to commend CREC students, representing every school, who received academic awards in the 2018-2019 school year at the local, regional, state, and national levels. Students displayed their work to attendees at a reception followed by an on-stage recognition for all participants.

The Delta-T Group sponsored *multiple* CREC events during 2018-2019

For over five years, the Delta-T Group has been one of CREC's most loyal partners and donors contributing to FallStaff (CREC's annual employee convocation), the Back to School Block Party, the Bruce E. Douglas Scholarship for Overcoming Adversity, and CREC Athletics.

Delta-T has been helping CREC for a long time, as their relationship began years ago when the company provided staffing services to CREC for specialists, paraeducators, and bus monitors.

"We have been privileged to see professionals we have placed at CREC, honored as successful CREC employees," said Michelle Byrd, education team manager at Delta-T. "CREC provides a great service to the community in so many ways, and we value our continued partnership in the success of CREC and the students we all support."

The CREC Foundation looks forward to what 2019-2020 will bring, and hopes to expand our charitable efforts and build relationships with more community partners.



▲ CREC FallStaff 52 at the Bushnell Performing Arts Center, August 2018



▲ CREC 4th Annual Back to School Block Party where 1,200 backpacks filled with school supplies were distributed



▲ The Bruce E. Douglas Scholarship for Overcoming Adversity 2019 recipients



▲ Delta-T helped sponsor CREC Athletics

CREC Foundation Donors

Funding Agencies

Aetna
Aetna Foundation, Inc.
Air Temp Mechanical Services, Inc.
Amazon Smiles
American Eagle Federal Credit Union
Associated Security Corporation
Autumn Transportation Inc.
Barr Foundation
Bela Living Realty LLC
BSL Educational Foundation Inc.
C&C Janitorial Supplies, Inc.
Cas Foundation, Inc. (J.Robert Ford Grant)
Catching The Waves
Charities of Hope, Inc.
Charles Schwab
CMRK, Inc.
Community Foundation of Tampa Bay
Connecticut Academy of Science & Engineering
CT Business Systems
Delta-T Group Hartford, Inc.
DonorsChoose.org
East River Energy
Ellen Jeanne Goldfarb Memorial Chartable
Environmental Services, Inc.
Gerber Technology
GHAA Parents, Friends and Alumni
Greater Hartford Arts Council
Greenberg Family Foundation, Inc.
Hamilton Sundstrand
Hartford Foundation for Public Giving
Hartford Lodge No. 19 BPO Elks
Hear Here Hartford
Hearing Loss Association of America
Horace Bushnell Memorial Hall Corp
Housing Management LLC
Joseph A. Fells Living Trust
Kaman
Klingberg Family Centers, Inc.
Konica Minolta Business Solutions
Max Pizza II LLC
Mayo Crowe LLC
Mega Education, LLC
Move Your Mind
Network for Good
New York Life Your Cause, LLC
Orgoz Business LLC
Owens Reality Services, Inc.
Panera, LLC
Perfect Portraits
Phoenix Manufacturing Inc.
Pratt & Whitney
Propel Pac
Rainbow Graphics
Rich's
Robotics Education & Competition Foundation
Ryan T Lee Memorial Foundation, Inc.
Scholarship America
Scholastics, Inc.
Shipman & Goodwin
Stanley Black & Decker, Inc.
Tekko Enterprises, Inc.
The Benevity Community Impact Fund
The Betty Knox Foundation, Inc.
The Sullivan Investment Group
Transamerica Life Insurance Company
Transportation Management Solutions
Travelers
Travelers Community Connections
Travelers Cyber Grants, Inc.
UCONN
United Technologies Charity Program
United Way of Central & Northeastern CT
USA Hauling and Recycling
Vistra Energy
Walmart
Wells Fargo Advisors, LLC
Wethersfield Evangelical Free Church
William Caspar Graustein Memorial Fund
William D Berghoff
YourCause, LLC Trustee for New York Life



Individual Donors

Ashlynn Abbott
Efrain & Olga Agosto
Sheena Aimey
Aura Alvarado
Ana Y. Alvarez
Darcy Anderson-Abbott
Jennifer Anilowski
Alfredo Archilla
Diana Barlow
Maria L. Baroncini
Gerald Barrett
Rick Bassett
Susan Bassett
Darlene Beaudry
James F. & Terry Bedard
Gregg Blackstone
Stephen Bordeau
Debra Borrero
Elaina Brachman
Wanda Broaden
Thomas Brodnitzki
Kevin Brown
Michelle Byrd
Mary Candeias
Kara Carmichael
Robert J. & Lisa G Carr
Pierrette J. Centeno
Julie Christianson
Jerome Clapis
Treda Collier
Alisa Collins
Z. Myree Conway
Wayne D. & Judith H. Cooley
Nancy Cooper
Willa Correnti
Eric Crawford
Sandra Cruz Serrano
Patricia Curry
Frank Curtin
Craig E. Cutler
Heather Cymbala
Al Dadario
Romina D'Angelo
Christopher Darby
Evelyn De La Cruz
Scott DelBuono
Maureen DePierro
Joanny Diaz

Joseph S. Distefano
Heather Doucette
Bruce E. & Allison K. Douglas
Sasha Douglas
John & Constance Dowd
Kristen & Jeff Drucker
Jill Dunn
Rebecca Duval
Grace Ellis
Sarah Ellsworth
Edward Estelle
Jeannette Estrada
Carlos Figueroa
Sarah Fitzsimons
Greg Florio
Robert Forker
Craig K. & Nanette M. Fresher
Don Frye
Katherine Gervais
Kevin Gillen
Mary Glassman
Laurie Gonzalez
Cara A. Hart
James & Joann Hazzard
Nilda Hernandez
Josiah Hills
Gayle Hills
David Hoopes
Elizabeth Hopkins
Hugh Iglesias
Jeffrey Ivory
Courtney Johnson
Julie Karatkewicz
Amy Karwan
Jessica Kazigian
Sarah B. Kendall
Mary C. & James P. Kennedy
Gina Ketchum
Michell E. Knott
Luke & Jennifer A. Knoz
Christine Ko
Giovannina Koch
Steven & Anne Koval
Jason P. & Deborah B. Krueger
Jeffrey Larson
Casondra Lash
Paula Lebel
Angela Lemon

Jessica Leon
Anthony Lindsey
Nicholas Lombardi
Hilda Lopez
Daysi Lora
Marlene Lovanio
Rebecca Lowry
Kimberly Luke
Moriha Maloney
Elizabeth Marrero
Joan M. & Thomas J. Marsh
David Mathesen
Syera & Biju G. Mathew
Robert B. & Gail S. Maxwell
William Wilson Keithline III & Beth Mazadoorian
Douglas McCrory
Maura McGuire
Yvette Melendez
Domenico Miele
Martina Miller
Ada M. Miranda
Mary Lou Molloy
Heather L. Morgan
Victor Morganthaler
John Moroney
Marjorie E. Morrissey
Taryn Moss
Antonio Napoleone
Ruth U. Napoleone
Kristen Nolan
Christopher T. Nolan
Margarita Ortiz
Jeffrey Ostroff
Roselyn Pacè
Safiah Palenza
Thomas Parvenski
Mikayla & Michael Pascucci Jr.
Stacy & James A. Perrone
Elizabeth J. Chaterdone Perry
Christopher Peters
Jon C. & Amy E. Peyton
Patricia Phelan
Tom Poplawski
John Pratt
William Quiros
Banning Rauls
Susan M. & Richard P. Renehan

CREC Foundation Donors

Individual Donors *(continued)*

Deborah Richards	Paul Vanasse
Gail Loughlin Rogers	Charles V. & Pamela A. Vanbeveren
Craig Roncaioli	Alan J. & Ann-Marie Veniscofsky
Maria Rosa	David Ventres
Ercillia Rosa	Sarah Vocca
Alicia Rosalie	Jacqueline Lapenta Wasta
Christine B. Rose	Joel Weisel
Emily Rosen	Mark S. White
Catherine Rotella	William Ackerman & Susan Whittle
Craig & Christine Roth	Charles S. Wilson
Christine Ruman	Terry Wilson
Stefania A. Russo	Julia Winer
Donato Salvucci	Gayle Wintjen
Janet Scialdone	Jill Wnuk
Maria J. Segarra	Darlene Wolliston
Richard Serrano Sr.	Elizabeth Wood
Deborah Shalkey	Chan D. Wu
G.J. Shettle	Jill Zaino
Lawerence Shipman	Maria Zapata
Tricia Silva	Robert Zapor
Sarah Slotter	Kara Zdrojeski
Gregory I. & Joanne B. Smith	Erin Zelazny
Ricardo Soto	
Stacy Stefanowich	
Peter Stein	
Rebecca Stevens	
Peter N. Stevens	
Dianne Stone	
Susan Stoppelman	
Nakisha Strickland	
Emily R. Noel & Timothy J. Sullivan	
Paul Sullivan	
Robyn Sullivan	
T. Thornton Sullivan	
Tim & Geri Sullivan	
Nicole & Kevin S. Supinski	
David Sutherland	
Deborah A. & Brent K. Talbott	
Karen T. Taylor	
Lydia Tedone	
Regina Terrell	
Mason Thrall	
Tamika Thurston	
Margarita Torres	
Alicia Torres	
Jennifer Traks	
Rebekah Van Anden	
Deborah Van Wyngaarden	

Regional Collaboration and Partnerships

State Agencies

CT Assistive Technology Project
CT Board of Education and Services for the Blind
CT Bureau of Rehabilitation Services
CT Commission on the Arts
CT Commission on Children
CT Commission on Deaf and Hearing Impaired
CT Cooperative Extension
CT Departments of:

- ▷ Administrative Services
- ▷ Children and Families
- ▷ Corrections
- ▷ Developmental Services
- ▷ Economic and Community Development
- ▷ Education
- ▷ Environmental Protection
- ▷ Health
- ▷ Labor
- ▷ Public Health and Addiction Services
- ▷ Social Services
- ▷ Support Services Division

CT Coalition for the Education of Deaf and Hard of Hearing Children
CT Development Authority
CT Health and Educational Facilities Authority
CT Husky Health Care
CT Office of Early Childhood
CT Technical Education and Career System

Higher Education

Asnuntuck Community College
Bureau of Voc-Tech Schools
CT Adult Education Programs
Central Connecticut State University
Capital Community College
Charter Oak College
Goodwin College
Eastern Connecticut State University
The Lincoln College of New England's Dental Hygiene Program
Manchester Community College
Office of Higher Education
Quinnipiac University
Sacred Heart University
Trinity College
Tunxis Community College
University of Connecticut
University of Hartford
University of New Haven
University of Saint Joseph
Wesleyan University
Yale University

Professional Associations

Accreditation Facilitation Project
Adult Numeracy Network
After School Network Alliance
American Association of School Administrators
American Society of Training and Development
Association of Education Service Agencies (AESAs)
Association of Teachers of Math in Connecticut
Commission on Adult Basic Education
CT Academy of Educational Leaders
CT Administrators of Programs for English Language Learners
CT Association of Adult and Continuing Education
CT Association of Boards of Education
CT Association for Children With Learning Disabilities
CT Association for the Education of Young Children
CT Association of Nonprofits
CT Association of Public School Superintendents
CT Association of School Business Officials
CT Association of School Personnel Administrators
CT Association of Secondary Schools
CT Business and Industry Association
CT Child Care Training Academy
CT Council of Administrators of Special Education
CT Council on Developmental Disabilities
CT Council of Leaders of Mathematics
CT Parent Advocacy
CT Principals' Academy
CT Quality Council
CT School Public Relations Association
CT Teachers of English to Speakers of Other Languages
Hartford Area Superintendents Association
International Association of Psychosocial Rehabilitation Services
National Commission on Adult Basic Education
National Coalition for Literacy
National and CT Associations for the Education of Young Children
New England Parent Information Education
Northeast Educational Research Association
Raising Readers Beginning with Books
University Center for Excellence in Developmental Disabilities

Legislative

Advisory Committee on Intergovernmental Relations (ACIR)
Connecticut General Assembly

Regional Collaboration and Partnerships

Local and Regional Agencies

Capital Area Substance Abuse Council
Capital Region Workforce Development Board
Capitol Region Council of Governments
Career Resources
Catholic Family Services
Celebration Foods
Connecticut Association of Schools
Connecticut Association of Supervision and Curriculum Development
Connecticut Historical Society
Connecticut Puerto Rican Forum
Connecticut Women's Education and Legal Fund
Co-Opportunity, Inc.
EESmarts/Eversource
Greater Hartford Arts Council
Greater Hartford Legal Aid
Greater Hartford Transit District
Greater Hartford YMCA
New Britain YMCA
Hartford Area Child Care Collaborative
Hartford Consortium for Higher Education
Hartford Foundation for Public Giving
Leadership Greater Hartford
Manchester Historical Society
MetroHartford Regional Economic Alliance Metropolitan District Commission
Midstate Medical Center
National Center for Family Literacy
New England Assistive Technology
New England Regional Literacy Resource Center
Northeast and Islands
Pitney Bowes Foundation
Regional Laboratory for Educational Improvement of the Riverfront Recapture
Southend Institutions Neighborhood Alliance (SINA)
State Education Resource Center
The Workforce Inc.
United Illuminating
United Way of the Capital Area
University of Connecticut Health Center
VOCAL

Hartford Agencies and Organizations

Child Health and Development Institute of Connecticut (CHDI)
City of Hartford
Coalition to Strengthen Sheldon/Charter Oak Neighborhood
Community Health Services
Community Renewal Team
Hartford District Parole Office
Hartford Hospital
Hartford Multicultural Center
Hartford Public Library
Hartford Stage
Institute of Living
Mark Twain House and Museum
Old State House
Saint Francis Hospital and Medical Center
The Bushnell

Federal Agencies

Environmental Protection Agency
National Aeronautics & Space Administration
U.S. Department of Education
U.S. Department of Housing & Urban Development

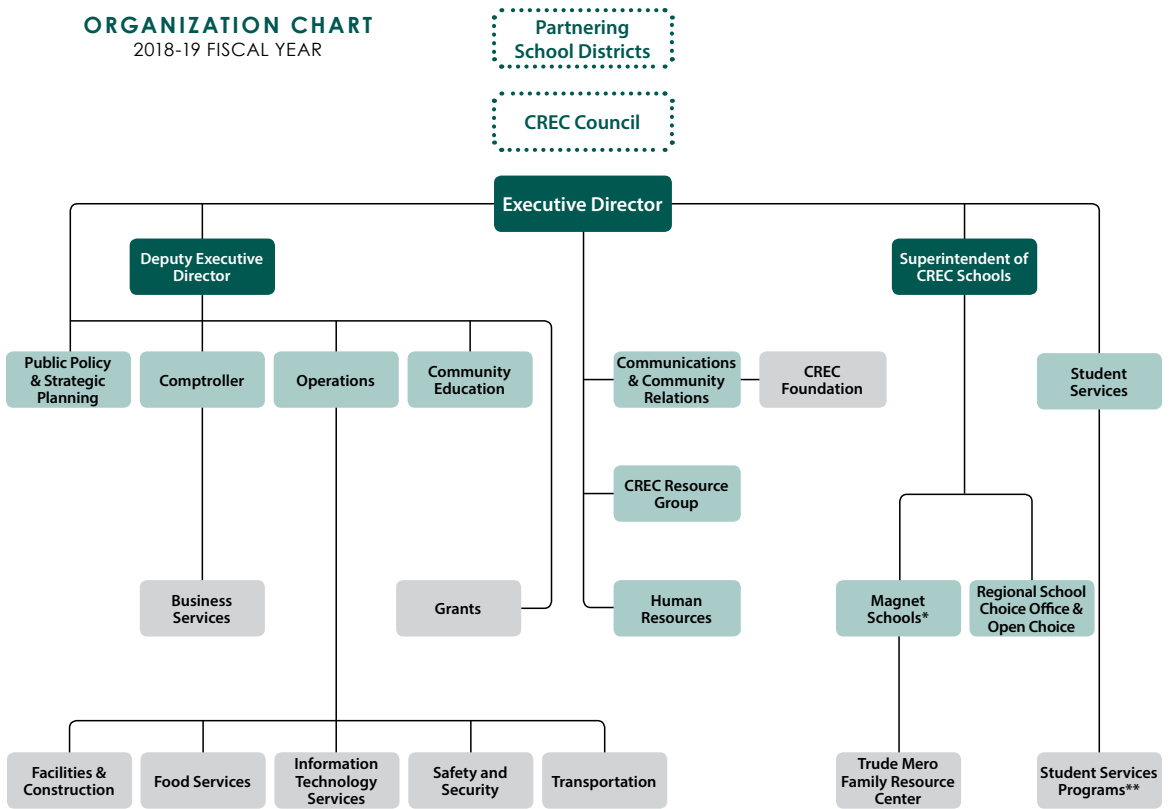
Regional Educational Service Centers

CREC is one of six Regional Educational Service Centers (RESCs) in Connecticut. Membership in one RESC enables a district to access the programs and services from other RESCs if those services are not available within their region. CREC works with the following RESCs as an Alliance to provide services to virtually every public school district in Connecticut.



ORGANIZATION CHART

2018-19 FISCAL YEAR






*16 Magnet Schools

CREC Academy of Aerospace and Engineering
 CREC Academy of Aerospace and Engineering Elementary School
 CREC Academy of Science and Innovation
 CREC Ana Grace Academy of the Arts Elementary School
 Civic Leadership High School
 CREC Discovery Academy
 Glastonbury-East Hartford Magnet School
 CREC Greater Hartford Academy of the Arts High School
 CREC Greater Hartford Academy of the Arts Middle School
 CREC International Magnet School for Global Citizenship
 CREC Metropolitan Learning Center for Global and International Studies
 CREC Montessori Magnet School
 CREC Museum Academy
 CREC Reggio Magnet School of the Arts
 CREC Two Rivers Magnet Middle School
 CREC University of Hartford Magnet School

**Student Services Programs

Birth to Three Program at Soundbridge
 Farmington Valley Diagnostic Center
 CREC John J. Allison, Jr. Polaris Center
 CREC River Street Autism Program at Birken
 CREC River Street School
 CREC Soundbridge
 Southern Transition Real-World and Independent Vocational Education (STRIVE)

CREC Stakeholders

-  Executive Leadership Team (ELT)
-  Departments with members of the Leadership Team
-  Departments

Budget Statement: Fiscal Year Ending June 30, 2019

PROGRAM	AMOUNT
General Fund Programs	
Academy of Aerospace and Engineering	\$12,981,712
Academy of Aerospace and Engineering	
Elementary School	7,777,343
Academy of Science and Innovation	12,851,761
Ana Grace Academy of the Arts	
Elementary School	8,290,838
Center for Creative Youth (CCY)	319,585
Central Office Facility Cost Center	1,687,730
Civic Leadership High School	8,268,607
Communications Office	977,329
Discovery Academy	7,282,984
Executive Office	450,018
Farmington Valley Diagnostic Center	1,139,112
Glastonbury-East Hartford Magnet School	6,920,758
Grants Office	206,933
Greater Hartford Academy of the Arts	13,367,674
Greater Hartford Academy of the Arts	
Middle School	6,973,193
Human Resources Office	1,131,621
Integrated Program Models	3,129,240
International Magnet School for	
Global Citizenship	6,862,837
Learning Corridor Campus	3,697,388
Lincoln Academy	488,095
Made in the Shade	52,045
Magnet School Cost Center	31,394,759
Metropolitan Learning Center for	
Global and International Studies	13,550,435
Montessori Magnet School	6,477,289
Museum Academy	7,748,783
Office of Finance and Operations	4,547,599
Polaris Center	5,441,737
Reading Recovery	30,000
Reggio Magnet School of the Arts	7,555,900
River Street School	30,795,486
School Transportation Management Services	21,600,000
Soundbridge	6,495,168
STRIVE	457,111
Student Services	501,246
Transportation Services	4,742,037
Two Rivers Magnet Middle School	10,873,025
University of Hartford Magnet School	9,258,234
General Fund Subtotal	\$266,325,612

PROGRAM	AMOUNT
Special Revenue Fund Programs	
21st Century Learning Centers	
Before-and-After School	\$299,293
Capitol Region Choice Program	14,397,117
Community Education	356,500
Connecticut Technical High School System	
Related Services	958,200
CT Office of Early Childhood Education	3,054,756
CT Technical High Schools Events	
Management Service	94,170
Dept. of Corrections—Professional Development	
& GED Testing	54,000
Developing Tomorrow's Professionals/Perkins/	
Financial Literacy	177,013
Discovery Center	100,000
Early Education	2,307,901
Early Intervention Birth to Three Services	1,972,190
Employment & Training Services	621,861
Entitlement Grants	1,142,455
Impact Academy	200,000
Interdistrict Anytown Leadership Institute	41,000
Magnet Schools Assistance Program	3,920,621
Parenting Support Services	131,822
Project PACT	33,657
SDE Early Childhood Program	242,512
Sheff Technical Services Agreement	2,033,287
Statewide Family Engagement Center	987,624
Supplemental Services	582,701
Youth Service Programs	1,252,245
Special Revenue Fund Subtotal	\$34,960,925

Capital Projects Fund Programs	
Academy of Aerospace and Engineering	\$925,237
Academy of Aerospace and Engineering	
Elementary School	38,008,577
Academy of Science and Innovation	2,850,217
Ana Grace Academy of the Arts	18,292,523
Civic Leadership High School	1,090,904
Discovery Academy	672,942
Museum Academy	1,476,802
Capital Projects Fund Subtotal	\$63,317,202

Enterprise Fund Programs	
Adult Training & Development Network	
of Connecticut	\$266,073
Brokered Services	3,854,400
Construction Services	1,786,930
Learning Corridor Theater	99,600
Montessori Training Center Northeast	1,241,194
Non-Instructional Services	422,000
Regional Fingerprinting Services	141,145
Resource Group	4,143,430
Enterprise Fund Subtotal	\$11,954,772

SUMMARY BY FUND TYPE	
General Fund	\$266,325,612
Special Revenue Fund	34,960,925
Capital Projects Fund	63,317,202
Enterprise Fund	11,954,772
GRAND TOTAL	\$376,558,511

Projected Budget Statement: Fiscal Year Ending June 30, 2020

PROGRAM	AMOUNT
General Fund Programs	
Academy of Aerospace and Engineering	\$12,749,535
Academy of Aerospace and Engineering	
Elementary School	8,258,946
Academy of Science and Innovation	12,183,297
Ana Grace Academy of the Arts	
Elementary School	8,111,914
Central Office Facility Cost Center	1,981,697
Civic Leadership High School	7,994,674
Communications Office	933,664
Discovery Academy	7,795,767
Executive Office	453,315
Farmington Valley Diagnostic Center	1,133,263
Glastonbury-East Hartford Magnet School	7,619,892
Grants Office	207,573
Greater Hartford Academy of the Arts	12,956,542
Greater Hartford Academy of the Arts	
Middle School	7,335,424
Human Resources Office	1,127,809
Integrated Program Models	3,107,161
International Magnet School	
for Global Citizenship	7,403,956
Learning Corridor Campus	3,873,517
Made in the Shade	49,821
Magnet School Cost Center	34,671,061
Metropolitan Learning Center for	
Global and International Studies	13,016,956
Montessori Magnet School	6,590,460
Museum Academy	8,643,995
Office of Finance and Operations	4,730,363
Polaris Center	4,898,793
Reggio Magnet School of the Arts	7,930,344
River Street School	32,246,374
School Transportation Management Services	22,032,000
Soundbridge	5,557,356
STRIVE	461,004
Student Services	553,866
Transportation Services	4,945,671
Two Rivers Magnet Middle School	11,325,642
University of Hartford Magnet School	8,370,507
General Fund Subtotal	\$271,252,159

PROGRAM	AMOUNT
Special Revenue Fund Programs	
Capitol Region Choice Program	\$15,003,665
Connecticut Technical High School System	
Related Services	954,718
CT Office of Early Childhood Education	3,052,912
Dept. of Corrections—Professional Development	
& GED Testing	25,568
Developing Tomorrow's Professionals/Perkins/	
Financial Literacy	163,693
Early Education	829,401
Early Intervention Birth to Three Services	1,903,598
Employment & Training Services	440,862
Impact Academy	370,030
Magnet Schools Assistance Program	4,459,153
SDE Early Childhood Program	208,780
Sheff Technical Services Agreement	2,064,994
Statewide Family Engagement Center	987,624
Supplemental Services	459,884
Youth Service Programs	861,500
Special Revenue Fund Subtotal	\$31,786,382

Capital Projects Fund Programs	
Academy of Aerospace and Engineering	
Elementary School	\$19,590,355
Ana Grace Academy of the Arts	
Elementary School	58,540,221
Capital Projects Fund Subtotal	\$78,130,576

Enterprise Fund Programs	
Adult Training & Development Network	
of Connecticut	\$351,317
Construction Services	1,164,888
Learning Corridor Theater	99,400
Montessori Training Center Northeast	1,289,697
Regional Fingerprinting Services	133,085
Resource Group	8,373,729
Enterprise Fund Subtotal	\$11,412,116

SUMMARY BY FUND TYPE	
General Fund	\$271,252,159
Special Revenue Fund	31,786,382
Capital Projects Fund	78,130,576
Enterprise Fund	11,412,116
GRAND TOTAL	\$392,581,233

Governance

Council Officers



David Joy
Chair
South Windsor Public Schools



Christopher C. Wilson
Vice Chair
Bristol Public Schools



Jeremy Grieveson
Secretary/Treasurer
Glastonbury Public Schools

Council Representatives

Avon – Jackie Blea
Berlin – Brian Benigni
Bloomfield – Donald F. Harris, Jr. *
Bolton – Chris Davey
Bristol – Christopher C. Wilson *
Canton – Joseph Scheideler *
Cromwell – Celina Kelleher
East Granby – Joseph Doering
East Hartford – Tyron V. Harris
East Windsor – Christine DeBarge
Ellington – Gary Blanchette *
Enfield – Charlotte Riley
Farmington – Chris Fagan
Glastonbury – Jeremy Grieveson *
Granby – Mark Fiorentiono
Hartford – Karen Taylor
Hartland – To be appointed
Manchester – Chris Pattacini *
New Britain – Merrill Gay
New Hartford – To be appointed
Newington – Sharon Braverman
Plainville – Becky Tyrrell *
Portland – Timothy Lavoy *
Region 10 – John Vecchitto *
Rocky Hill – Laurie Boske
Simsbury – Lydia Tedone *
Somers – Anne Kirkpatrick *
Southington – Timothy Connellan *
South Windsor – David Joy *
South Windsor (*Alternate*) – Erica Evans
Suffield – Maureen Sattan
Vernon – Linda Gessay
West Hartford – Carol Anderson-Blanks
Wethersfield – Ginger McCurdy
Windsor – Ayana Taylor *
Windsor Locks – Patricia King

** Board Members of the CREC Council*



111 Charter Oak Ave.
Hartford, CT 06106
860-247-CREC

www.crec.org



[fb.com/CRECExcellenceinEducation](https://www.facebook.com/CRECExcellenceinEducation)



[@CRECEducation](https://www.instagram.com/CRECEducation)

