

## RSCO TRANSPORTATION SERVICES

February 13, 2024

Dear Parents and Guardians of the Regional School Choice Office (RSCO) Transportation:

Transportation Management Solutions (TMS) school buses are now equipped with GPS technology that may benefit your household. The WheresTheBus™ parent app lets you know precisely when your child's bus will arrive at your bus stop. This app is free to all TMS bus-riding households. The system also helps TMS efficiently manage our bus fleet.

To use the WheresTheBus™ app, download the WheresTheBus™ app from the App Store (iOS / Apple) or Google Play Store (Android). You will be prompted to create an account. Select **"RSCO (CT)"** from the dropdown menu and provide your student's information. Once your student's information is verified, you will create an account and will be able to log in and access the app.

Additional information on the WheresTheBus™ parent app is included below. I encourage you to try this exciting new technology, as we continually strive to provide you with the best possible transportation service.

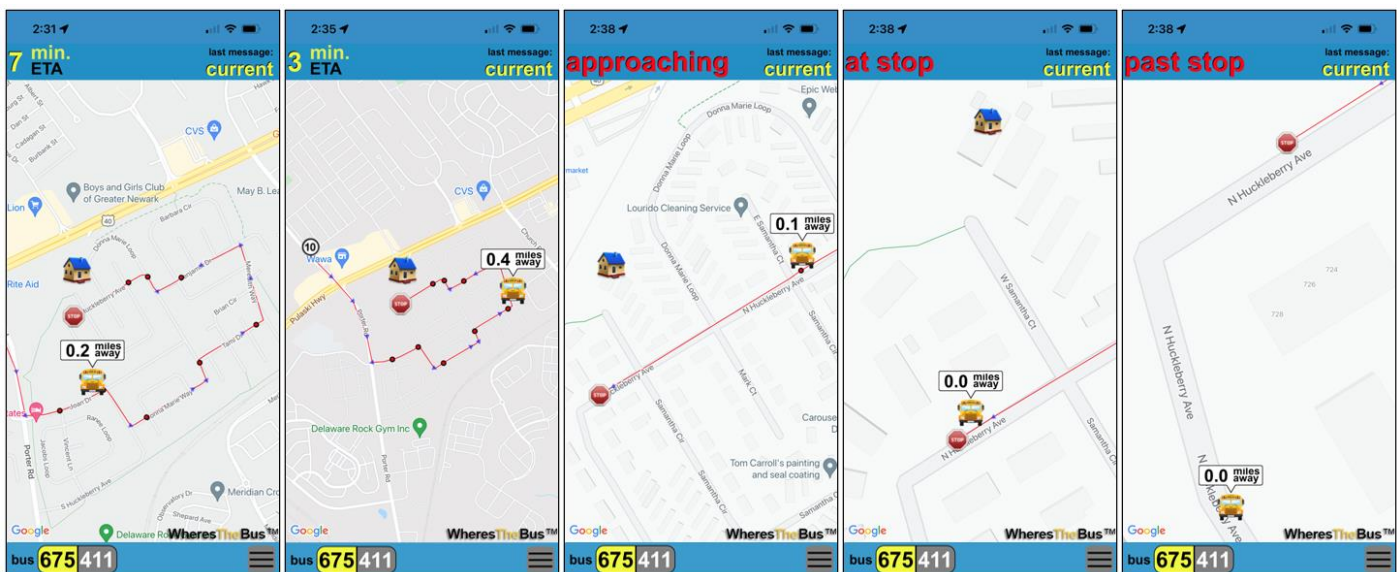
Sincerely,

### Regional School Choice Office (RSCO) Transportation

WheresTheBus™ lets you know precisely when your bus will arrive at your bus stop, providing up-to-the-minute arrival time and bus location information.

- Access WheresTheBus™ from any Internet enabled device (smartphone, tablet, PC, iPod).
- Apple iOS and Android apps are available.
- Avoid the weather and wait for the bus in the comfort of your own home.
- Eliminate the stress of rushing to the bus stop and wondering where the bus is.

Parent app time progression (actual screen shots):





---

## RSCO TRANSPORTATION SERVICES

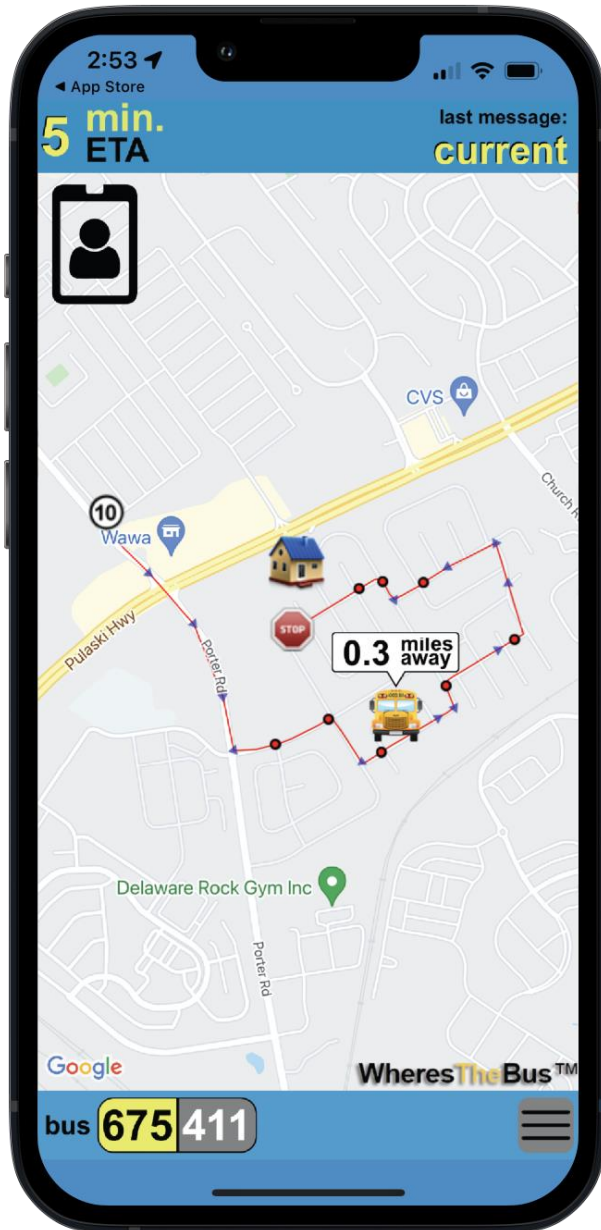
The WheresTheBus™ app is free to RSCO Transportation/TMS households, simple, and takes less than 5 minutes to set up.

To sign up:

1. Download the WheresTheBus™ app from the App Store (iOS / Apple) or Google Play Store (Android).
2. You will be prompted to create an account.
3. Select “**RSCO (CT)**” from the dropdown menu and provide your student’s information.
4. Once your student’s information is verified, you will create an account.
5. Log in to the app and access real-time bus information for your student(s).

If you are experiencing issues registering for the app, please email [support@wheresthebus.com](mailto:support@wheresthebus.com) for assistance.

# WheresTheBus Parent App



The WheresTheBus Parent App lets households know precisely when their child's bus will arrive at their bus stop.

Updated every 15 seconds, WheresTheBus displays the real-time minutes and miles the bus is from the household's bus stop.

Any member of the bus-riding household can access this information from any Internet connected device.

The WheresTheBus App is available to download for:

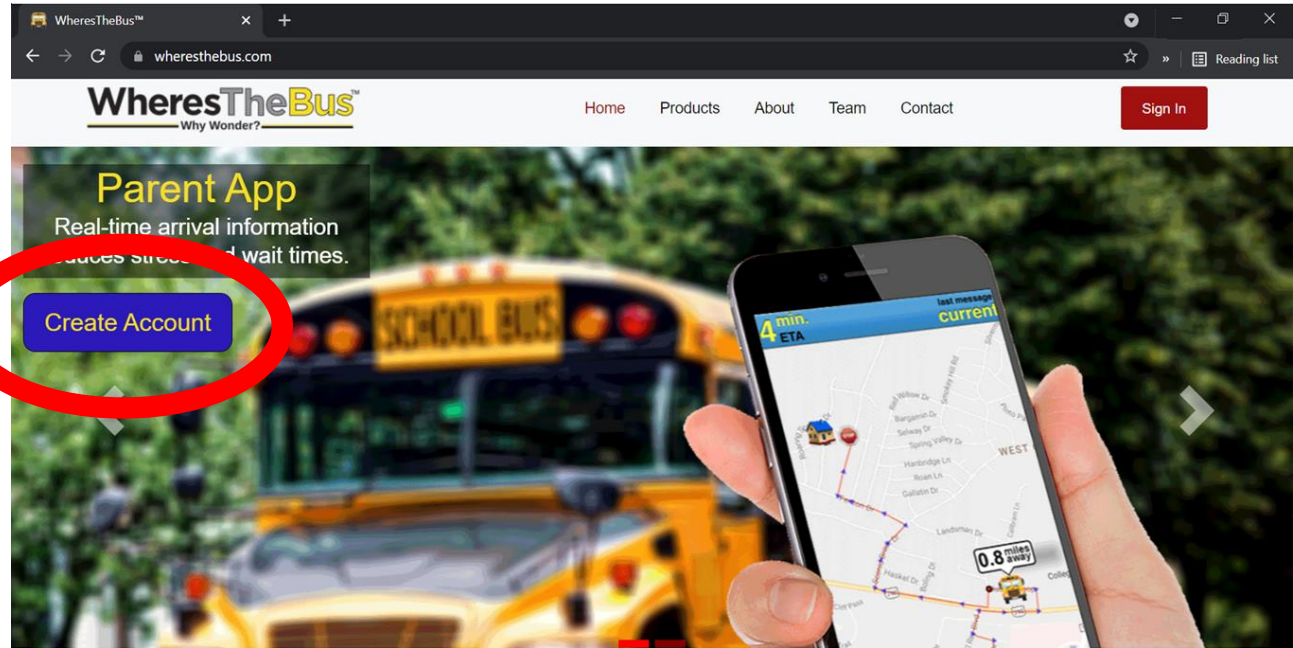
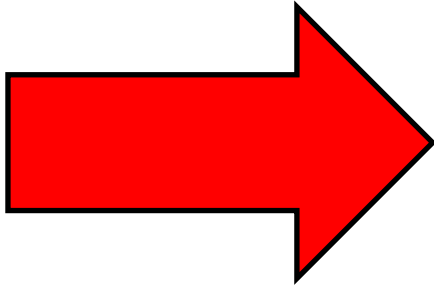
- iOS (App Store)
- Android (Google Play Store)

Also accessible via web browser for any Internet connected device.

**Where's  
TheBus™**  
Why Wonder?

# Creating an Account

Parents sign up at  
**[www.WheresTheBus.com](http://www.WheresTheBus.com)**:



Parents are allowed to create an account only if they can **validate their student information**. Parents are prompted to enter their student's **birth date** and **student ID #**. If the information entered does not match the student data on file, the parent will not be able to create an account.

WheresTheBus™

About Contact Sign In

» You are signing up for the Collier County (FL).  
» If this is not correct, please click [here](#) and reselect your school district.  
» If this is correct, please enter at least one student to proceed.

**Student Info**  
Please click below button to add the student.  
Add Student

**Add student**

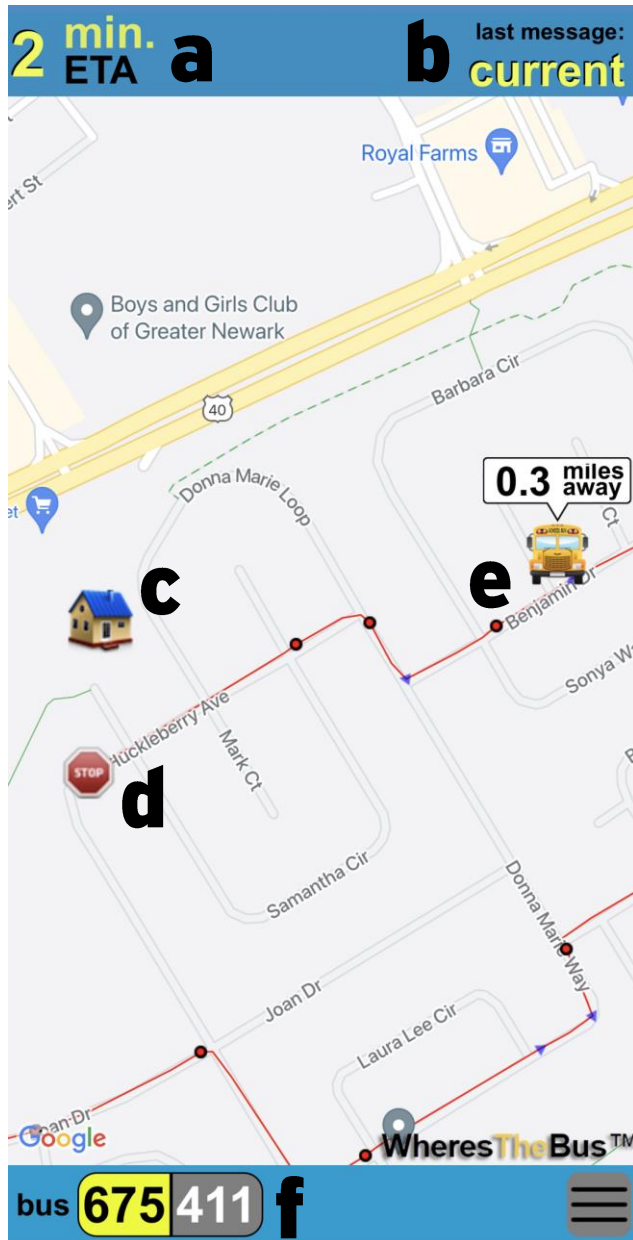
Birth Date (mm/dd/yyyy)  
Student ID  
Please Enter Student ID

Trouble Signing Up? [Email Support](#)

Save Cancel



# Using the App



**a. Arrival Status:** Estimated time of arrival (ETA) is displayed when bus arrival time can be predicted. When a prediction is unavailable, use the bus location and distance from your stop.

**b. Last Message:** “current” is displayed when bus data has been received in the last minute. If updates are not received, the bus is likely stopped at a school or layover or inactive (no messages in the last 15 minutes).

**c. Your House:** represented by home icon.

**d. Your Bus Stop:** represented by stop sign icon.

**e. Bus Location & Distance:** represented by bus icon and distance.

**f. Bus #:** Click on the bus # to switch between buses (if multiple). If bus 36 were subbing for bus 41, it would be displayed as 36(41).

# Time Sequenced WheresTheBus Parent App Screenshots

