

Making Connections

CREC Annual Report 2006-2007

Connecting people and resources for quality education

Farmington Glastonbury Granby Hartford Hart
Region #10 Rocky Hill Simsbury Somers Southin
Windsor Locks Avon Berlin Bloomfield Bolton B
nfield Farmington Glastonbury Granby Hartfo
Plainville Portland Region #10 Rocky Hill Simsb
Wethersfield Windsor Windsor Locks Avon Berlin
East Windsor Ellington Enfield Farmington Glas
Newington Plainville Portland Region #10 Rocky
Vernon West Hartford Wethersfield Windsor Win
Granby East H nton En
New Britain N Plainville
South Windsor Hartford W
Canton Crom tford East
Manchester N Newington
South Windsor West Hartford W
Canton Crom East Granby East Hartford East
Hartford H and Manchester New Britain New
Somers Southington South Windsor Suffield Ver
Bolton Bristol Canton Cromwell East Granby East
Hartford Hartland Manchester New Britain New
Simsbury Somers Southington South Windsor Su
Bloomfield Bolton Bristol Canton Cromwell East
Farmington Glastonbury Granby Hartford Hartl
Region #10 Rocky Hill Simsbury Somers Southin



Executive Director's Report: 2006-2007



Bruce E. Douglas, P.H.D.

FY 2007 was another year of significant accomplishment for the Capitol Region Education Council. CREC ended 2006-07 with an operating budget of \$108 million – nearly triple the budget of just nine years ago. We employed more than 1,200 people and offered our districts more than 125 programs and services. We contained our leadership budget to only 5% of our operating budget. As a result, our indirect costs to members averaged 5% compared to the 9.78% approved in FY 2007.

The Division of Student Services expanded its capacity to provide mental health services for individuals from birth to age 21. These services, available to districts or directly to parents via insurance coverage, include evaluation, diagnosis, medication management, treatment, and referral. The School for Young Children on Asylum Hill, a socially and economically integrated school serving children from birth - kindergarten, completed its first year. This family-centered school provides full day, full-year programming. In partnership with the University of Hartford, CREC Soundbridge trained its first class of students in a new master's program called Aural Habilitation and Evaluation of Hearing Impaired Children. Elizabeth Cole, Ed.D., director of Soundbridge, co-authored the book *Children with Hearing Loss: Developing Listening and Talking* with Carol Flexer, Ph.D. It will be used to instruct teachers of the hearing impaired worldwide. Finally, the State approved a plan to build an addition that will almost double Soundbridge's size. Construction will begin this school year.

The Division of Community Education Training and Employment Services provided comprehensive workforce development services, including assessment services, through the region's CT Works Employment Centers. The division expanded English as a Second Language classes and services to the Dutch Point revitalization project. We also coordinated the Bridges to Healthcare project and served as lead agency for the youth employment and learning program. In the area of professional development, the division trained 3,000 adult educators and practitioners as part of the school to career, family literacy, and American history initiatives.

The Division of Technical Assistance & Brokering Services (TABS) provided technical assistance, consultation, and professional development to almost 10,000 individuals from districts in the greater Hartford region and throughout the state. Staff coordinated professional development for 1,400 teachers in the CT Technical High School System, provided training to 425 incarcerated youths in the Department of Correction to help them pass the Graduate Entrance Diploma exam, and trained 100 educators in instructional and behavior coaching. TABS broadened its brokering program to meet the current staffing challenges facing districts by developing a Speech/Language Assistance program, an Advanced Alternate Route to Certification to cross endorse regular education teachers in special education, and a Transition to Paraprofessional program.

The Division of Magnets and Choice Programs served 3,966 students from every CREC member district through a variety of programs and our eight interdistrict magnet schools. The Montessori Magnet School won the Magnet Schools of America (MSA) School of Excellence Award and the Eugene M. Uram School of Merit Award given by MSA to the outstanding public Montessori school of the year. The Metropolitan Learning Center earned the Magnet Schools of America Magnet School of Distinction Award for a third consecutive year. The Greater Hartford Academy of Math and Science, Two Rivers Magnet Middle, and East Hartford-Glastonbury Elementary Magnet were designated as NASA Explorer Schools. Two Rivers was also one of only four sites designated by the CT Department of Education as a "model site for best practices." The Greater Hartford Academy of the Arts opened a full-day program. Great Path Academy added a 10th grade class. The division also managed the state's largest Open Choice program, transporting 1,068 students to 127 schools in 27 districts, and 37 interdistrict programs, the largest in the state.

Facilities, Operations and School Construction had another productive year. It supervised the construction of the River Street School Annex, wrote a grant application for and is now managing a construction project that doubles the size of the Soundbridge facility, served the school building committee of the East Hartford/Glastonbury Elementary Magnet School, and provided energy saving programs that helped our districts achieve significant cost savings.

The Division of Teaching and Learning continues to help districts enhance the quality of instruction, curriculum, and assessments. Staff worked closely with the Department of Education School Improvement Unit to provide training and assistance to schools that have been identified as in need of improvement. Staff, for the first time, managed the Supplemental Educational Service (SES) program for Hartford Public Schools. The SES program provided free after school tutoring to over 1,500 students in grades K-12. Staff also began a partnership with the city's youth services department to enhance the quality of academic tutoring services offered by non-profit community based organizations.

The Grants Division in 2006-2007 raised funds for a playground and classroom furniture for the School for Young on Asylum Hill. Staff also applied for and received a grant from NASA that designated three of magnets as NASA Explorer Schools. This grant enabled five teachers and one principal to spend two weeks at the Goddard Space Center receiving extensive professional development in the space sciences. During the next two years, NASA scientists will spend a significant amount of time in all three schools and provide professional development to staff.

The Division of Technology Services launched several strategic initiatives in support of managing district data to improve school efficiency and provide greater insight into student performance. Technology Services assisted member districts with on-demand and full-time outsourced technical expertise at below market rates; expanded the Microsoft School Agreement, which saved districts more than \$2 million over the past three years; and helped schools run more cost-effectively by offering a comprehensive technology audit service.

A handwritten signature in black ink, appearing to read "Bruce E. Douglas".

CREC Mission, Vision and Objectives

Mission

To work with boards of education of the Capitol Region to improve the quality of public education for all learners.

To achieve its mission, CREC will:

- Promote cooperation and collaboration with local school districts and other organizations committed to the improved quality of public education.
- Provide cost effective services to member districts and clients.
- Listen and respond to client needs for the improved quality of public education.
- Provide leadership in the region through the quality of its services and its ability to identify and share quality services of its member districts and other organizations committed to public education.

Vision

Every student can and shall learn at high levels and therefore must have access to all educational resources of the region through the system of public schools served by CREC.

Objectives

- To identify the educational needs of CREC member school systems.
- To bring together resources to help local school districts.
- Solve common problems.
- To stimulate local educational activities and develop new CREC programs which address the student goals of the CT Board of Education.
- To assist Local Boards of Education in providing a continuum of student services and settings which facilitates the education of all children.
- To provide quality direct services to identified students using an array of specialized cooperative, integrated and stand alone settings.
- To improve the quality of staff in CREC and its member districts for the purpose of improving learner achievement.
- To inform CREC membership, governmental bodies and the community at large about the contribution of CREC to the "Educational Enterprise."
- To achieve continued improvement in the conduct of all CREC internal and external services.

Goal

CREC staff and programs shall work with local school systems to meet their needs and the needs of students.

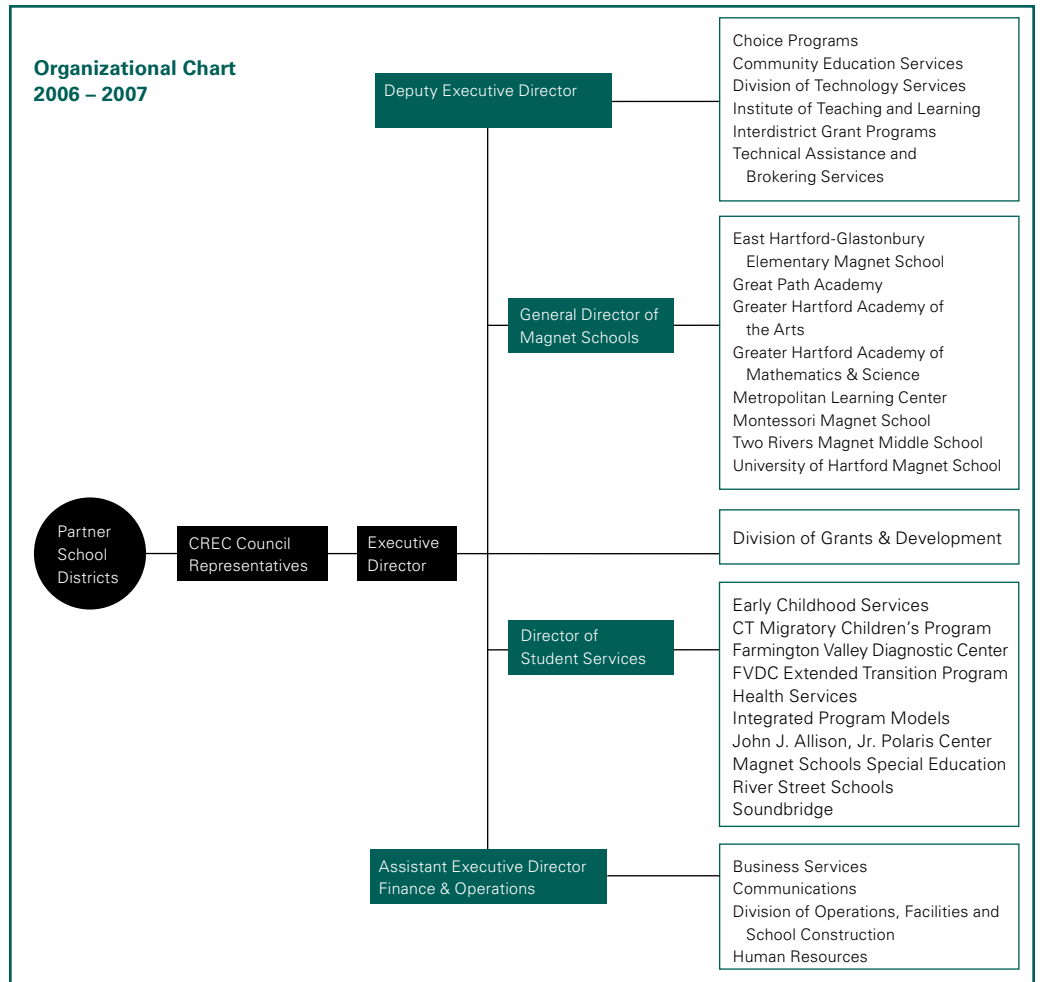
- Each student in the public schools of the Capitol Region will demonstrate learning at ever higher levels.
- Each student in the public schools of the Capitol Region will demonstrate, by the third grade, high levels of literacy.
- Each student in the public schools of the Capitol Region will participate in learning environments that more nearly reflect the diversity of the region's population.

How CREC Assesses Needs and Sets Priorities

CREC has long valued partnership building, listening and probing for understanding, and collaboration as it responds to the needs of its various clients. During 2006 - 2007, CREC continued to rely on feedback from:

- Advisory Committees that helped set program-specific priorities with direct service programs.
- CREC's Council, representing Board of Education members from urban, suburban, and rural districts, who meet monthly to discuss problems affecting education in our region and direct CREC to pursue an active role in providing high quality, cost-effective solutions. A Council retreat is held each year to set organizational direction.
- CREC's Professional Advisory Board, composed of superintendents who offer an administrative perspective of needs assessment.
- State agency needs assessments and planning documents as they reflect the needs of the Capitol Region and Connecticut.
- Strategic Plans of such organizations as the Capitol Region Partnership and its member agencies, the Connecticut State Department of Education comprehensive plans, and school district planning documents and superintendent reports.
- On-going meetings held with local staff: superintendents (Hartford Area Superintendents' Association); curriculum directors (Curriculum Council); special education directors (ConnCASE); personnel directors (Human Resources Council), and monthly meetings with the state education commissioner.
- CREC, as a charter member of the Capitol Region Partnership, meets monthly with other regional service agencies to determine needs and ways those needs can be met through cooperative efforts.

Information from these and other sources is analyzed and synthesized by the CREC Cabinet: the executive director, deputy executive director, assistant executive director for finance and operations, director of student services, general director of magnet schools, managing director of human resources, and director of human resources.



2006 – 2007 Governance

Board of Directors

Berlin - John Richards
Bolton - John Hambrook
Simsbury - Lydia Tedone - Sec. / Treasurer
Canton - Frank Byus - Vice Chair
Enfield - Lynn Scull
Granby - Cal Heminway
Hartford - David MacDonald
Plainville - Becky Tyrrell - Chair
Region 10 - Beth Duffy
Southington - Jerry Belanger
West Hartford - Terry Schmitt

Council Representatives

Avon - Dr. Angela Shelton
Berlin - John M. Richards
Bloomfield - Shirley Thompson
Bolton - John Hambrook
Bristol - Christopher C. Wilson
Burlington - Peter Turner
Canton - Frank Byus
Cromwell - Shirley Banic
East Granby - Michaela Rosenberger
East Hartford - Karen S. Howe
East Windsor - Terri Willingham
Ellington - William Harford
Enfield - Joyce P. Hall
Farmington - Mary Grace Reed
Glastonbury - TBD
Granby - Cal Heminway
Hartford - Israel Flores
Hartland - Amy Bourque
Manchester - TBD
New Britain - Peter Kochol
Newington - TBD
North Hartford - TBD
Plainville - Becky Tyrrell
Portland - Honora Kenney
Region 10 - Beth Duffy
Rocky Hill - Charles McMonigle
Simsbury - Lydia Tedone
Somers - Joan Formeister
Southington - Jerry Belanger
South Windsor - Timothy Kenefick
Suffield - Lauren Life
Vernon - Amarjit Buttar
West Hartford - Terry Schmitt
Wethersfield - TBD
Windsor Locks - Brenda Ives
Windsor - John Eichner

Professional Advisory Board

Avon, Richard Kisiel
Berlin, Michael Cicchetti
Cromwell, Matt Bisceglia
East Granby, Christine Mahoney
East Hartford, Marion Martinez
Enfield, John Gallacher

(Professional Advisory Board continued)

Farmington, Robert Villanova
Hartford, Stephen Adamowski
Glastonbury, Alan Bookman
Granby, Gwen Van Dorp
New Britain, Doris Kurtz
New Hartford, Philip O'Reilly
Newington, Ernest Perlini
Plainville, Kathy Binkowski
Portland, Sally Doyen
Region 10, Paula Schwartz
Rocky Hill, Cam Vautour
Southington, Harvey Polansky
South Windsor, Robert Kozaczka
Suffield, John Reynolds
Windsor, Elizabeth Feser
Windsor Locks, Gregory Little

CREC Administration

Bruce E. Douglas, Ph.D.,
Executive Director

Colleen A. Palmer, Ph.D.,
Deputy Executive Director

Donald P. Walsh,
*Assistant Executive Director for Finance
& Operations*

Denise Gallucci
General Director of Magnet Schools

Frances Difiore,
*Assistant Director of Magnet Schools,
Director of Teaching & Learning*

Richard A. Cormier,
Director of Human Resources

Jacqueline L. Wasta,
Director, Student Services

Doug Casey,
*Director of Education Technology
Services*

Mark O'Donnell, Ph.D.,
Director, Grants Division

George Dowaliby,
*Director, Technical Assistance &
Brokering Services*

Andrew Tyskiewicz,
*Director, Community Education,
Training and Employment Services*

Dwight F. Blint,
Director of Communications

Roger LaFleur,
Facilities

Budget Statement *(Fiscal Year Ending June 30, 2007)*

PROGRAM	AMOUNT
General Fund Programs	
Executive Director's Office	\$ 314,159
Deputy Exec. Director's Office	321,977
Business Services	2,786,902
Human Resources	786,485
Communication Services	227,577
Student Services	353,151
Teaching and Learning Services	109,708
Grants and Development Office	261,183
The Forum	3,520
Interdistrict Grants Office	146,825
Minority Teacher Recruiting	30,000
Soundbridge	4,302,925
River Street School (RSS)	19,179,150
Integrated Program Models (IPM)	4,147,550
Farmington Valley Diagnostic Center	917,860
Polaris Center	6,562,140
Administrative Cost Center	915,950
Project Literacy - Reading Recovery	100,300
Technical Assistance & Brokering Services	296,981
Allied Health Career Collaborative	20,000
Learning Corridor Cost Center	3,726,000
Montessori Magnet School	3,717,804
East Hartford / Glastonbury Magnet School	2,491,924
Greater Hartford Academy of Math & Science Magnet School	2,081,337
Metropolitan Learning Center Magnet School	7,766,109
Greater Hartford Academy of the Arts (GHAA)	3,725,515
GHAA School Magnet Arts Programs	83,820
Center for Creative Youth (CCY)	816,500
University of Hartford Magnet School (UHMS)	5,704,652
Magnet School Cost Center	3,282,000
Two Rivers Magnet Middle School	7,732,994
Great Path Academy	948,919
General Fund	\$ 84,881,417
Special Revenue Fund Programs	
Common Ground	\$ 64,439
We're Making Connecticut History	124,875
Summer Share	22,978
Discovery Center	125,933
CT Youth Forum	88,153
SIFT - Summer Institute for American Politics	127,655
Summer Institute for American Politics	109,925
City Slickers	47,490
Neighborhood Studios	62,746
Kids n Critters	18,692
CREC Leadership Academy	105,530
Exploring Diversity Through Aquaculture	100,765
Summer Institute for Science and Math	101,010
CREC Tech	64,125
4-H Center at Auer Farm	13,808
Choice Summer	159,250
Youth Educator's Society	36,935
Project PACT	112,075
Teaching American History	654,123
Math/Science Partnership Grants	79,931
Special Services Support Team	994,000
Connecticut Technical High School System Related Services	700,000
REACT - Regional Education Assessment Consultation Team	875,000

PROGRAM	AMOUNT
Special Revenue Fund Programs (continued)	
Title III Consortium	104,065
Gambling Awareness and Education Program	40,000
CT Department of Children and Families	10,000
Board of Education & Services for the Blind Related Services	300,000
CT Technical High Schools Events Management Service	665,000
Summer Youth Employment Program	403,000
Capitol Region Choice Program	4,194,000
School -To- Career / Perkins	414,250
Supplemental Services	159,300
Entitlement Grants	580,145
Connecticut Migratory Children's Program	195,715
Employment & Training Services	725,500
Year Round Suburban Youth	30,000
Preschool Intervention Program	313,350
Early Education	1,470,380
HAEYC	172,025
Early Intervention Birth to Three Services	1,602,725
Dept. of Corrections - Professional Development	265,000
Community Education	2,038,755
Metacomet Ridge Interdistrict Academy	68,705
EQUAL Summer	125,000
Pupil Partners	74,455
Graustein Fund Discovery Grant	23,900
Special Revenue Fund	\$ 18,764,708
Montessori Training Center of New England	\$ 133,000
Learning Corridor Theater	95,275
Cooperative Purchasing	5,150
Regional Fingerprinting Services	80,848
Office of Communications	9,000
Continuing Education Units (CEU)	10,174
Beginning Educator Support and Training (BEST)	3,100
Connecticut Association of School Business Officials (CASBO)	13,594
Conference Services	180,145
Educational Technology Provision of Services	712,000
School Improvement Center	939,100
TABS - General Provision of Services	339,000
Adult Training & Development Network of Connecticut	421,200
School Facility Services	292,775
Enterprise Fund	\$ 3,234,361
Internal Service Fund Programs	
CREC Wide Area Network	\$ 1,222,046
Internal Staff Development	100,000
Copy Center	224,634
Internal Service Fund	\$ 1,546,680
GRAND TOTAL	\$ 108,427,166
SUMMARY BY FUND TYPE	
General Fund	\$ 84,881,417
Special Revenue Fund	18,764,708
Enterprise Fund	3,234,361
Internal Service Fund	1,546,680
TOTAL	\$ 108,427,166

Projected Budget Statement *(Fiscal Year Ending June 30, 2008)*

PROGRAM	AMOUNT	PROGRAM	AMOUNT
General Fund Programs		Special Revenue Fund Programs (continued)	
Executive Director's Office	\$ 334,491	Project PACT	100,000
Deputy Exec. Director's Office	345,934	Teaching American History	633,335
Business Services	2,772,415	Special Services Support Team	1,254,000
Human Resources	847,139	PD/TABS - Vocational Technical School system Related Services	750,000
Communication Services	239,084	REACT - Regional Educational Assessment Consultation Team	946,000
Student Services	376,981	CT Technical High School Events Management Service	600,000
Teaching and Learning Services	115,579	Youth Learning and Employment Program	553,675
Grants and Development Office	343,151	Capitol Region Choice Program	4,312,000
The Forum	3,520	School -To- Career / Perkins	506,700
Interdistrict Grants Office	95,180	Supplemental Services	275,150
Minority Teacher Recruiting	28,000	Employment & Training Services	901,815
Soundbridge	4,874,290	Preschool Intervention Program	345,050
River Street School (RSS)	21,318,700	Early Education	1,549,615
Integrated Program Models (IPM)	4,398,075	Early Intervention Birth to Three Services	1,726,000
Farmington Valley Diagnostic Center	891,660	Dept. of Corrections - Professional Development	120,000
Polaris Center	7,315,450	Community Education	1,996,080
Administrative Cost Center	1,027,300	Metacomet Ridge Interdistrict Academy	61,136
Coltsville Facility	1,115,500	EQUAL Summer	98,000
PD/TABS - Administration	315,225	Special Revenue Fund	\$ 17,867,351
Allied Health Career Collaborative	20,000	Montessori Training Center of New England	\$ 165,000
Learning Corridor Cost Center	3,630,845	Cooperative Purchasing	7,000
Montessori Magnet School	3,670,050	Regional Fingerprinting Services	96,000
East Hartford / Glastonbury Magnet School	2,677,500	Continuing Education Units (CEU)	10,500
Greater Hartford Academy of Math & Science Magnet School	2,262,910	Beginning Educator Support and Training (BEST)	3,200
Metropolitan Learning Center Magnet School	8,497,050	Connecticut Association of School Business Officials (CASBO)	14,700
Greater Hartford Academy of the Arts (GHAA)	3,830,450	Conference Services	185,040
GHAA School Magnet Arts Programs	110,200	Educational Technology Provision of Services	787,000
Center for Creative Youth (CCY)	782,845	School Improvement Center	982,000
University of Hartford Magnet School (UHMS)	5,877,700	TABS - General Provision of Services	308,500
Magnet School Cost Center	4,152,330	Adult Training & Development Network of Connecticut	336,465
Two Rivers Magnet Middle School	8,470,350	School Facility Services	352,130
Great Path Academy	1,207,460	Enterprise Fund	\$ 3,247,535
General Fund	\$ 91,947,364	CREC Wide Area Network	\$ 1,571,240
Special Revenue Fund Programs		Internal Staff Development	95,000
We're Making Connecticut History	\$ 135,000	Copy Center	206,760
Discovery Center	148,725	Internal Service Fund	\$ 1,873,000
CT Youth Forum	90,000		
SIFT - Summer Institute for American Politics	153,000	GRAND TOTAL	\$ 114,935,250
Summer Institute for American Politics	148,500		
City Slickers	54,000	SUMMARY by FUND TYPE	
CREC Leadership Academy	108,000	General Fund	\$ 91,947,364
Exploring Diversity Through Aquaculture	108,000	Special Revenue Fund	17,867,351
Summer Institute for Science and Math	139,570	Enterprise Fund	3,247,535
4-H Center at Auer Farm	18,000	Internal Service Fund	1,873,000
CREC Eastern CSU-Future Teacher's Network	36,000		
		TOTAL	\$ 114,935,250

Service Matrix 2006-2007

Administrative Services

	Avon	Berlin	Bloomfield	Bolton	Bristol	Canton	Cromwell	East Granby	East Hartford	East Windsor	Ellington	Enfield	Farmington	Glastonbury	Granby	Hartford	Hartland	Manchester	New Britain	New Hartford	Newington	Plainville	Portland	Region #10	Rocky Hill	Simsbury	Somers	Southington	South Windsor	Suffield	Vernon	West Hartford	Wethersfield	Windsor	Windsor Locks					
EXECUTIVE DIRECTOR- SPECIAL PROJECTS																																								
ED 539 Data Collection	●	●	●	●	●	●	●	●	●	●	●	●	●	●	●	●	●	●	●	●	●	●	●	●	●	●	●	●	●	●	●	●	●	●	●	●	●			
CT Academy/Educational Leaders	●	●	●	●	●	●	●	●	●	●	●	●	●	●	●	●	●	●	●	●	●	●	●	●	●	●	●	●	●	●	●	●	●	●	●	●	●			
CT Assn/Public Schools Supts (CAPSS)	●	●	●	●	●	●	●	●	●	●	●	●	●	●	●	●	●	●	●	●	●	●	●	●	●	●	●	●	●	●	●	●	●	●	●	●	●			
Hartford Area Supts Assn (HASA)	●	●	●	●	●	●	●	●	●	●	●	●	●	●	●	●	●	●	●	●	●	●	●	●	●	●	●	●	●	●	●	●	●	●	●	●	●			
CREC GOVERNANCE																																								
Board of Directors	●	●	●	●	●	●	●	●	●	●	●	●	●	●	●	●	●	●	●	●	●	●	●	●	●	●	●	●	●	●	●	●	●	●	●	●	●			
Council	●	●	●	●	●	●	●	●	●	●	●	●	●	●	●	●	●	●	●	●	●	●	●	●	●	●	●	●	●	●	●	●	●	●	●	●	●	●		
Professional Advisory Board	●	●	●	●	●	●	●	●	●	●	●	●	●	●	●	●	●	●	●	●	●	●	●	●	●	●	●	●	●	●	●	●	●	●	●	●	●	●		
Assistant Executive Director	●	●	●	●	●	●	●	●	●	●	●	●	●	●	●	●	●	●	●	●	●	●	●	●	●	●	●	●	●	●	●	●	●	●	●	●	●	●		
ADMINISTRATIVE SERVICES																																								
Conference Center	●	●	●	●	●	●	●	●	●	●	●	●	●	●	●	●	●	●	●	●	●	●	●	●	●	●	●	●	●	●	●	●	●	●	●	●	●	●		
Cooperative Purchasing	●	●	●	●	●	●	●	●	●	●	●	●	●	●	●	●	●	●	●	●	●	●	●	●	●	●	●	●	●	●	●	●	●	●	●	●	●	●	●	
Communications Services	●	●	●	●	●	●	●	●	●	●	●	●	●	●	●	●	●	●	●	●	●	●	●	●	●	●	●	●	●	●	●	●	●	●	●	●	●	●	●	
Grant Writing Services	●	●	●	●	●	●	●	●	●	●	●	●	●	●	●	●	●	●	●	●	●	●	●	●	●	●	●	●	●	●	●	●	●	●	●	●	●	●	●	
PERSONNEL SERVICES																																								
Fingerprinting	●	●	●	●	●	●	●	●	●	●	●	●	●	●	●	●	●	●	●	●	●	●	●	●	●	●	●	●	●	●	●	●	●	●	●	●	●	●	●	
Human Resources Council	●	●	●	●	●	●	●	●	●	●	●	●	●	●	●	●	●	●	●	●	●	●	●	●	●	●	●	●	●	●	●	●	●	●	●	●	●	●	●	●
Admin Support Roundtable	●	●	●	●	●	●	●	●	●	●	●	●	●	●	●	●	●	●	●	●	●	●	●	●	●	●	●	●	●	●	●	●	●	●	●	●	●	●	●	●

Service Matrix 2006-2007

Division of Community Education

	Avon	Berlin	Bloomfield	Bolton	Bristol	Canton	Cromwell	East Granby	East Hartford	East Windsor	Ellington	Enfield	Farmington	Gastonbury	Granby	Hartford	Manchester	New Britain	New Hartford	Newington	Plainville	Portland	Rocky Hill	Simsbury	Somers	Southington	South Windsor	Suffield	Vernon	West Hartford	Wethersfield	Windsor	Windsor Locks	CREC's Region	Other Regions	Total	
Adult Basic Education			28		1				25							142	8	7	1												13	1	8	1	236	51	287
Adult Training/Development Network	2	8	32	23	4	1			14	2	12	4	4	4	93	2	16	5		5	11			2	2			36	24	4	14	8	325	1459	1784		
Bridges to Health Care Careers			3		1				4	1					47	1														1	9		67		67		
CT Works	2	34		33	2	1			98	8	12	91	2	4	1	497	62	157	11	2			2	8	5	9		16	27	8	44	13	1151	66	1217		
Family Literacy and Development	2	6	10	2	30	2	2	2	30	30	1	40	10	1	1	150	21	30	4		30	1	1				1	8	30	10	50	2	509	1007	1516		
PACT Grant	705			208		350		485														740			480								806	3734	3734		
School to Career	4	4	5	5	6	3	6	4	13	4	4	14	6	9	3	34	8	7	3	5	3	5	5	4	5	6	6	8	11	4	10	4	223	415	638		
Teaching American History			1	2					32								10				4							15	16				90	10	100		
Transition to Employment			1		2				23							190	8	5	4									2	22	3	7		287	4	271		
Youth Programs			22						50		60		15			1800	50		22							14		16	20	15			204	15	2099		
Total	715	18	136	217	96	361	10	471	289	43	19	217	22	29	9	2953	169	223	3	52	50	1	748	15	473	17	21	164	45	142	834	8686	3027	11713			

Service Matrix 2006-2007

Technical Assistance & Brokering Services

	Avon	Berlin	Bloomfield	Boton	Bristol	Canton	Cromwell	East Granby	East Hartford	East Windsor	Ellington	Enfield	Farmington	Glastonbury	Granby	Hartford	Hartland	Manchester	New Britain	New Hartford	Newington	Plainville	Portland	Region #10	Rocky Hill	Simsbury	Somers	South Windsor	Southington	Suffield	Vernon	West Hartford	Wethersfield	Windsor	Windsor Locks	Total/Students Served in CREC Districts
Total Number of People Served	138	4	75	107	30	2	35	1	882	5	650	6	18	73	1317	0	1	10	6	2	104	512	116	4	99	12	40	58	70	68	61	39	55	4675		
TA/consultation	134		42	63	28		27		871	2	587			49	1208						94	498	72	0			35	30	49	63	13	4	15	1	3885	
Brokering	1											3	1	13										11		2	16		50			15		112		
PD/Workshops	1	2	5	5	2	2	6	1	11	3	3	2	11	33	33	1	10	6	2	10	1	5	2	11	1	3	15	3	7	5	5	6	2	182		
EAP											3	3	5	5										22				2			2		34			
VHS			24	38										3	58							13	38		26	11		13			12	16	33		285	
Title III	2	2	4	1						2	3	1	3	5	4							1	2	8								4		42		
MISC							2				60	1	10	1										21							40			135		

Service Matrix 2006-2007

Institute of Teaching and Learning

	Avon	Berlin	Bloomfield	Boton	Bristol	Canton	Cromwell	East Granby	East Hartford	East Windsor	Ellington	Enfield	Farmington	Glastonbury	Granby	Hartford	Hartland	Manchester	New Britain	New Hartford	Newington	Plainville	Portland	Region #10	Rocky Hill	Simsbury	Somers	Southington	South Windsor	Suffield	Vernon	West Hartford	Wethersfield	Windsor	Windsor Locks	
T&L Professional Dev. Workshops	1	20	16	4	30	6	29	2	47	19	34	33	12	8	32	204	1	15	12	2	35	5	2	14	21	37	13	19	24	6	7	23	59	35	22	
District Contracts	1	2	4						2	11	5	2	1	1	1	13		1	8					7	1	1	1	27	23	2	1	2	4	21	3	
Supplemental Services															1500																					
BEST	7	11	14	9	29	13	5	3	26	7	11	21	19	32	5	58		12	31	3	26	12	17	14	14	20	19	22	12	3	20	40	13	27	16	
Curriculum Council	x	x	x	x	x	x	x	x	x	x	x	x	x	x	x	x	x	x	x	x	x	x	x	x	x	x	x	x	x	x	x	x	x	x	x	x
Language Arts Council		x	x	x	x	x	x	x	x	x	x	x	x	x	x	x	x	x	x	x	x	x	x	x	x	x	x	x	x	x	x	x	x	x	x	x
Math Council	x	x	x	x	x	x	x	x	x	x	x	x	x	x	x	x	x	x	x	x	x	x	x	x	x	x	x	x	x	x	x	x	x	x	x	x
Science Council	x	x	x	x	x	x	x	x	x	x	x	x	x	x	x	x	x	x	x	x	x	x	x	x	x	x	x	x	x	x	x	x	x	x	x	x
Reading Recovery			2						1			7	3								7	5	2												1	
CALI									28							50																				

Service Matrix 2006-2007

Technology Services

	Avon	Berlin	Bloomfield	Bolton	Bristol	Canton	CRC/Schools	Cromwell	East Granby	East Hartford	East Windsor	Ellington	Enfield	Farmington	Glastonbury	Hartford	Hartland	Manchester	New Britain	New Hartford	Newington	Plainville	Portland	Region #10	Rocky Hill	Simsbury	Somers	Southampton	South Windsor	Suffield	Vernon	West Hartford	Wethersfield	Windsor	Windsor Locks	Total	Non CREC District	Grand Total
PD Workshops	6	4	6	6	4	1	134	9	2	1		3	10	4	12	7	36	5	2	3	10	5	14	2	11	9	8	2	19	5	2	18	11	6	6	383	289	
Grant		18		23	61	7		56		114						87		36	20				98		5			47	35		30				637			
Fee for Services In-District	3		15		20							35		30	60	110	60				15					45		620		230		25		1,268.00	60			
Informational Meetings/Presentations	8	2	5		1	1	16	4	4			4	9	2	10	4	9	2	2		13	20	2	3	8	5	1	9	3	6	6	8	6	12	185	55		

Service Matrix 2006-2007

Division of Student Services

	Avon	Berlin	Bloomfield	Bolton	Bristol	Canton	Cromwell	East Granby	East Hartford	East Windsor	Ellington	Enfield	Farmington	Glastonbury	Granby	Hartford	Hartland	Manchester	New Britain	New Hartford	Newington	Plainville	Portland	Region #10	Rocky Hill	Simsbury	Somers	Southampton	South Windsor	Suffield	Vernon	West Hartford	Wethersfield	Windsor	Windsor Locks	Out-of-District	
EARLY CHILDHOOD SERVICES																																					
Birth to Three Services	5	8	7		40				4	11	19	16	12	6	10	85		5	40		14	5		1	6	27	5	19	25	16	10	29	20	18	3	10	
Parent Aide Program									2						91																1						
Preschool Intervention Prog (PIP)									1						78															1							
FARMINGTON VALLEY DIAGNOSTIC CTR.	9					2		2			9				2						6		8			10	5									1	
POLARIS CENTER		2	3	1	1					2	4	2		2	1	25		8	10	2	1				1	2	1	1	1	1	2	1	4	3	40		
RIVER STREET SCHOOL																																					
Day Program		3	6		6	1				1	2	7		3		3		4	1		3	2				2	3	3	4	1	3	6	5	1	9	3	67
Extended Day Program			3		3	1				1	1				1		3		3							2	1	2	1	1	1	3		2		2	
Special Education Summer School		2	6		5	1				1	1	6		3		3		3	1		2	2				2	3	3	4	1	2	15	4	1	8	4	67
Integrated Program Models (IPM)						1				1					1			1			2									1						9	
Autism Program at Coltsville	1	1	1	1	1	1		1	1	2			1	5			3	1		2					1			2	1		1				22		
SOUNDBRIDGE	2	8	8	2	30		2	2	15	6	11	2	16	25	38		20	5	1	10	8	8	5	7	5	13	24	37	8	2	29	19	4	223			

Service Matrix 2006-2007

Division of Choice Programs

	Avon	Berlin	Bloomfield	Bolton	Bristol	Canton	Cromwell	East Granby	East Hartford	East Windsor	Ellington	Enfield	Farmington	Glastonbury	Granby	Hartford	Hartland	Manchester	New Britain	New Hartford	Newington	Plainville	Portland	Region #10	Rocky Hill	Simsbury	Somers	Southington	South Windsor	Suffield	Vernon	West Hartford	Wethersfield	Windsor	Windsor Locks	CREC	Other	Totals
INTERDISTRICT PROGRAMS																																						
4-H Farm Summer Program						35										52									19													106
Center for Creative Youth	2	1	3					2		1	1	1	1	1	9			1	5	1	1	2	2					1			4	1	2				108	146
Choice Summer Academy	5			3	3	9	8	5		9	2	10	14	10	8			2			8	4		1	14	22	1	2	7	4	4	17	2	52	111		237	
City Slickers					27											71												1									31	130
Common Ground			8					4					5			19					10										7	8	8				74	
CREC Tech Summer Academy	1	3	9					5			2				8		3	3			1							10			2	3	7	1			55	
CRILA	2		1	1	1	4	1	1	3	2	3	3	2	3	6		1	1	1	1	1	2	3	3	1	4	2	2	3	1	2	5	1	2	1	3	60	
CT Youth Forum	46	47	2				73	16		8	27	8	27	8	87	35	50	35	50		45				15	1	1	1	1	25	3	18			177	676		
EQUAL								13	1	1	1	1	6	6	17	9		9		5						6		6		3	2	27	3			111		
EDA			25					1							4										2				1	1		1				3	38	
Two Rivers Summer Academy								67			7					54	28											11						75		242		
Kids 'n Citters			25				27																													185		
Looking in Teen Theater	1	2				4	1	1			2	3	3		13		1	1	1						2	2		1	1	5	1	2				50		
Metacomet Ridge IA											26	24						184		1								64	48				45	52		468		
Neighborhood Studios	2	1	11			1		5			2		2	1	26	3	3	3	1	2	2	1	1	1	1	1	1	2		2		9			4	76		
Pupil Partners	43	92	53	21		73	133	28	28	60					220		206							25	30	88				106	45	83			50	1379		
Institute for American Politics			1	1				2							5		2								1					1	1	1	3	6	24			
Inst. for Science & Math	2	1						2					1	1	3		1	1												1	1	1			3	17		
Summer Musical Theater	1	2			1			2	1	1	1	2	6	6	6	1	3	1	3	2					1	6	1	1	1	1	1	1	6			47		
SummerShare															28																					50		
Institute for Future Teachers			3	1	1				1						1		1													3			2	1	22			
The Discovery Center										189	250				453	144															28					110	1184	
We're Making Connecticut History													42		255										92						142	58				611		
Young Educators' Society					73			33		11			12	6	13		17								40			18	14					35	299			
Totals	106	110	203	7	127	53	84	107	219	255	44	291	116	112	17	1298	0	220	460	0	26	59	2	5	198	94	4	71	139	56	36	221	243	407	18	135	536	6142

Service Matrix 2006-2007

Division of Choice Programs (continued)

	Avon	Berlin	Bloomfield	Bolton	Bristol	Canton	Cromwell	East Granby	East Hartford	East Windsor	Ellington	Enfield	Farmington	Glastonbury	Granby	Hartford	Hartland	Manchester	New Britain	New Hartford	Newington	Plainville	Portland	Region #10	Rocky Hill	Simsbury	Somers	Southington	South Windsor	Suffield	Vernon	West Hartford	Wethersfield	Windsor	Windsor Locks	
MAGNET SCHOOLS																																				
E. Hartford/Glastonbury Magnet									138					117																						
Gr. Hartford Academy of the Arts	5	8	2			3	11	3	2	6	7	6	7	7	20	7	74	15	13	1	11		4		25	29		14	4	7	7	27	20	15	4	
GH Academy Math/Science	3		9			1					9		7	2	6	51		18	14		8				21	8		4	3	2	2	8	7			
Great Path Academy				6					20	3				12	5	14		16																		
Metropolitan Learning Center		139								39		39				188																		200	60	
Montessori Magnet School	1	33					2	22			2				157		14	7	4	4	4	1	1		4			1	2		9	12	45	1		
Two Rivers Magnet Middle School								148						72	140	147												80								
U of Hartford Magnet School	30	13											20		203											37		2		42	28					
Polaris Center		1	2	1	2				1	5				1	1	21		4	8			1								2	3	1	1	3		
OTHER INITIATIVES																																				
Capitol Region Choice Program	40	15		22	39	41	41	21		43	13	78	97	43	56	3			0		57	63		8	38	101	18	19	55	24	41	77	13	13	30	
CREC Minority Teacher Recruiting	●	●	●		●	●		●		●		●	●	●	●	●		●	●	●	●	●	●	●	●	●	●	●	●	●	●	●	●	●	●	●

Regional Collaboration

CREC is grateful for the involvement of the following organizations in supporting the work of CREC during 2003 - 2004

Legislative:

Connecticut General Assembly

Funding Agencies:

Aetna Foundation, Inc.
AT&T Foundation
The Josef and Anni Albers Foundation
The Asia Society of New York
The Auerbach Foundation
The Barnes Foundation
Bob's Furniture Store
Bob's Stores
Carl Perkins Grant Program
Capitol Region Workforce Development Board
Center for Creative Youth Parent's Fund
Citigroup Foundation, Inc.
Community Renewal Team
Connecticut State Department of Education
CT Center for School Change
CT Commission on the Arts
CT Humanities Council
CVS Foundation
Dexter Cooperation
John W. Dorr Foundation
The Ensworth Charitable Foundation
Episcopal Diocese of CT
Ericsson Foundation
Fisher Foundation, Inc.
Goldman Sachs Foundation
The William Caspar Graustein Memorial Foundation
Greater Hartford Arts Council
Ellen Jeane Goldfarb Memorial Fund
Hartford Courant Foundation, Inc.
The Hartford Foundation for Public Giving
The Hartford Insurance Group Foundation
Hewlett Packard Foundation
The Jon B. Higgins Scholarship in Jazz
The Kellogg Foundation
The Knox Foundation
The Kreidler Foundation
The George A. and Grace L. Long Foundation
The David T. Langrock Foundation
Loctite Foundation
Mass Mutual Foundation
MetroHartford Chamber of Commerce
The Musical Club of Hartford, Inc. - Evelyn Bonar
The Napier Foundation
NASA
National Science Foundation
New Britain Foundation for Public Giving
New Britain Housing Authority
Northeast Utilities Foundation
Pheonix Foundation
Riverfront Recapture
Roberts Foundation
Savings Bank of Manchester Foundation
Singer Memorial Scholarship
Storrs Scholarship Fund
Toshiba Foundation
Tow Family Foundation
Tunxis Community College
UCONN Foundation, Inc.
US Department of Education
Vance Foundation
Verizon Foundation
Arthur Vining Foundation
Waterbury Foundation

Business:

ALSTROM Power
CIGNA
CISCO
CT Business & Industry Assn. (CBIA)
Educational Resources
Fleet Bank
Hamilton Sunstrand
Hartford Life
Hewlett Packard/Flo Tech
IBM
Imagineers
JDS Uniphase
Lucent Technologies
PCC Technology
McLaughlin & Associates
Microsoft
Mohegan Sun
Northeast Utilities/CL&P
Pratt & Whitney
Radio Station 93.7 FM
United Technologies
Toshiba
Webster Bank

Labor:

CT Business & Industry Association
CT Education Association
CT Federation of Teachers
New England Health Care Employees Union Local 1199

Arts/Cultural Organizations:

Bushnell
Cape Verde Performing Arts Institute
Charter Oak Cultural Center
Greater Hartford Arts Council
Hartford Neighborhood Studios
The Hartford Stage
Hill-Stead Museum
Sunken Garden Poetry Festival
Trinity College Austin Arts Center
Wadsworth Atheneum

Community/Human Service/ Education Organizations:

Accent, Inc.
Alexander Graham Bell Assn.
American Red Cross
American School for the Deaf
Birth to Three Family Service Coordination Centers
The Boys and Girls Club of Greater Hartford
Casey Family Services
The Center for Children's Advocacy
Center for Advanced Technology
Child Health and Development Institute of Connecticut
Children's Center, Hamden
Church of the Good Shepherd
Community Solutions
The Connecticut Historical Society
The Connecticut Youth Forum
Co-Opportunity, Inc./Youthbuild
CT Public Television (CPTV)
CT Audubon Society
CT Charts a Course
CT Distance Learning Assn.
CT Migrant Health Network
CT Science Center
Drugs Don't Work
Early Childhood Training & Resource Academy
East Hartford YWCA
Educational Resource Collaborative of NCC Equistrides

Even Start
Family Resource Centers
Fidelco
Foodshare
Greater Hartford Literacy Coalition
HARC Steppingstones
Hartford Area Child Care Collaborative
Head Start
Interval House
Klingberg Family Center
Learning Corridor Corporation
Literacy Volunteers of America
Mental Health Assn. of CT
National and CT Puerto Rican Forums
New Britain Family Resource Center
New Britain School Readiness Program
New Britain YWCA
New York League for the Hard of Hearing
North American Family Institute
Oak Hill School for the Blind
One-Stop Career Centers
Padres Abriendo Puertas (Parents Opening Doors)
Parent Aide Coalition
Parents As Teachers
Poverty and Race Research Action Council
Project Interact, Inc.
Salvation Army
Spanish Speaking Center
The Bridge
The Science Museum of CT
Trust House
Uconn's Auerbach Farm Agricultural Educational Center
Urban League
Village for Families & Children
Workforce Development Bds. of CT

Hospitals/Healthcare:

Burgdorf Clinic
Community Health Services
Center for Multicultural Psychological Services
Children's Home of Cromwell
CT Children's Medical Center
CT Institute for the Blind/Oak Hill
Greater Hartford Easter Seal Rehab Center
Hartford Behavioral Health Council
Hartford Community Healthcare
Hartford Hospital
Hartford VNA
Hispanic Health Council
Hospital for Special Care
Institute of Living
Lenox Hill Hospital, NY
Manchester Memorial Hospital
Manhattan Eye & Ear Hospital, NY
Natchaug Hospital
New Britain General Hospital
New Britain Systems of Care
New England Home Care
St. Francis/Mt. Sinai Hospital
UConn Health Center
UConn Speech & Hearing Clinic
Wheeler Clinic
Workers Comp. Rehab
Yale New Haven Hospital

State Agencies:

The Connecticut Department of Public Safety
The Connecticut Department of Emergency Planning
and Homeland Security
CT Board of Education & Services for the Blind
CT Bureau of Rehabilitation Services
CT Commission on the Arts

CT Commission on Children
CT Commission on Deaf and Hearing Impaired
CT Cooperative Extension
CT Departments of:
• Children & Families
• Corrections
• Education
• Environmental Protection
• Labor
• Mental Retardation
• Public Health & Addiction Services
• Social Services
CT Husky Health Care
CT Vocational Technical Schools
Governor's Coalition for Young Children

Higher Education:

State Board of Higher Education
Bureau of Voc-Tech Schools
CT State University System:
• Central CT State University
• Eastern CT State University
Community Technical Colleges:
• Asnuntuck
• Capital
• Charter Oak College
• Manchester
• Tunxis
The Education Alliance at Brown University
Goodwin College
Harvard University
The Massachusetts Institute for Technology
Quinnipiac University
Sacred Heart University
St. Joseph College
Trinity College
UConn School of Law
University of Connecticut
University of Hartford/Hartford College for Women
Wesleyan University
Yale University

Professional Associations:

Accreditation Facilitation Project
American Assn. of Adult & Continuing Education
American Assn. of School Administrators
American Society of Training & Development
CT Academy of Educational Leaders
CT Assn. of Adult & Continuing Education
CT Assn. of Boards of Education (CABE)
CT Assn. for Children With Learning Disabilities
CT Assn. for the Education of Young Children
CT Child Care Training Academy
CT Assn. of Public School Superintendents
CT Assn. of School Business Officials
CT Assn. of School Personnel Administrators
CT Assn. of Secondary Schools
CT Council of Administrators of Special Education
CT Principals' Academy
CT Quality Council
CT School Public Relations Assn.
Hartford Area Superintendents Assn.
International Assn. of Psychosocial Rehab Services
National and CT Assns. for the Education of Young Children (NAEYC and CAEYC)
Northeast Educational Research Assn.
Special Education Resource Center

Regional Agencies:

Capitol Region Partnership:

- Capital Region Workforce Development Bd.
- Capitol Region Council of Governments
- Greater Hartford Arts Council
- Greater Hartford Transit District
- Hartford Consortium for Higher Education
- Hartford Foundation for Public Giving
- Metropolitan District Commission
- MetroHartford Regional Economic Alliance
- United Way of the Capital Area

Capital Area Substance Abuse Council

Catholic Family Services

CT Puerto Rican Forum

East Hartford Fire Department

East Hartford Police Department

Greater Hartford Legal Aid

Hartford Area Child Care Collaborative

Infoline & Birth-to-Three Infoline

Leadership Greater Hartford

Manchester Fire Department

Manchester Police Department

New England Regional Literacy Resource Center

Regional Laboratory for Educational

Improvement of the Northeast & Islands

Riverfront Recapture

SINA (Southend Institutions Neighborhood Alliance)

West Hartford Fire Department

West Hartford Police Department

Hartford Agencies /Organizations:

City of Hartford

Coalition to Strengthen Sheldon/Charter Oak Neighborhood (CSS/CON)

Community Renewal Team

CT Works One Stop Career Center

Hartford Fire Department

Hartford Police Department

Hartford Multicultural Center

Hartford Youth Peace Initiative

NINA

SINA

Federal Agencies:

Environmental Protection Agency

U.S. Dept. of Education

U.S. Dept. of Housing & Urban Development

National Aeronautics & Space Administration

Regional Service Centers:

CREC is one of six Regional Educational Service Centers (RESCs) in Connecticut.

Membership in one RESC enables a district to access the programs and services from other RESCs if those services are not available within their region. CREC works with Area Cooperative Educational Services; Cooperative Educational Services; EASTCONN; LEARN, and Education Connection to provide services to virtually every public school district in Connecticut.

When districts connect great things happen



CREC Central Offices
111 Charter Oak Avenue
Hartford, Connecticut 06106
(860) 247-CREC/2732
Fax (860) 246-3304
Visit us at: www.crec.org