

Excellence in Education

CREC School Facilities



111 Charter Oak Avenue, Hartford, CT 06106
860-247-CREC
www.crec.org



Middle and High Magnet Schools



- 1 CREC Academy of Aerospace and Engineering Elementary School: Pre-K3 to Grade 5
- 2 CREC Discovery Academy: Pre-K3 to Grade 5
- 3 Glastonbury-East Hartford Magnet School: Pre-K3 to Grade 5
- 4 CREC Ana Grace Academy of the Arts Elementary School: Pre-K3 to Grade 5
- 5 CREC International Magnet School for Global Citizenship: Pre-K3 to Grade 5
- 6 CREC Montessori Magnet School: Pre-K3 to Grade 6
- 7 CREC Museum Academy: Pre-K3 to Grade 5
- 8 Preschool at CREC's Medical Professions and Teacher Preparation Academy: Preschool (ages 3 and 4)
- 9 CREC Reggio Magnet School of the Arts: Pre-K3 to Grade 5
- 10 CREC University of Hartford Magnet School: Pre-K3 to Grade 5
- 11 CREC Greater Hartford Academy of the Arts Middle School: Grades 6 to 8
- 12 CREC Two Rivers Magnet Middle School: Grades 6 to 8
- 13 CREC Academy of Aerospace and Engineering: Grades 6 to 12
- 14 CREC Greater Hartford Academy of the Arts High School: Grades 9 to 12
- 15 CREC Medical Professions and Teacher Preparation Academy: Grades 6 to 12
- 16 CREC Metropolitan Learning Center for Global and International Studies: Grades 6 to 12
- 17 CREC Public Safety Academy: Grades 7 to 12
- 18 CREC Two Rivers Magnet High School: Grades 9 to 12



CREC Medical Professions and Teacher Preparation Academy

(Grades 6 to 12) See page 4.
Architect: Antinozzi Associates
600 Slater Road, New Britain, CT 06053

Established	2010
Current Enrollment.....	530
Total Enrollment	736
Square Footage	145,000
Project Budget.....	\$64,507,200

CREC Metropolitan Learning Center for Global and International Studies

(Grades 6 to 12)
Architect: Kaestle Boos Associates, Inc.
1551 Blue Hills Avenue, Bloomfield, CT 06002

Established	1998
Enrollment	736
Square Footage	147,041
Project Budget.....	\$34,148,713

CREC Public Safety Academy

(Grades 7 to 12)
Architect: S/L/A/M Collaborative
1617 King Street, Enfield, CT 06082

Established	2008
Current Enrollment.....	527
Total Enrollment	700
Square Footage	145,000
Project Budget.....	\$66,486,125

CREC Two Rivers Magnet Middle School

(Grades 6 to 8)
Architect: Tecton Architects (formerly DuBose Associates, Inc.)
337 East River Drive, East Hartford, CT 06108

Established	2002
Enrollment	664
Square Footage.....	128,000
Project Budget.....	\$32,736,979

CREC Two Rivers Magnet High School

(Grades 9 to 10)
15 Van Dyke Avenue, Hartford, CT 06106
(Grades 11 and 12)

15 Vernon Street, Hartford, CT 06106

Established	2013
Current Enrollment.....	303
Total Enrollment	880
Square Footage.....	182,527
Project Budget.....	\$108,308,509



CREC Magnet Schools

Middle and High Magnet Schools



CREC Academy of Aerospace and Engineering
(Grades 6 to 12)

CREC Greater Hartford Academy of Mathematics and Science
(Half-Day Program, Grades 10 to 12)

Architect: Friar Associates
1101 Kennedy Road, Windsor, CT 06095

Established 2010
Current Enrollment.....636
Total Enrollment735
Square Footage150,000
Project Budget.....\$81,873,481

CREC Greater Hartford Academy of the Arts Middle School
(Grades 6 to 8)

Architect: Maier Design Group
75 Van Dyke Avenue, Hartford, CT 06106

Established 2012
Current Enrollment.....328
Total Enrollment660
Square Footage127,500
Project Budget \$74,614,104

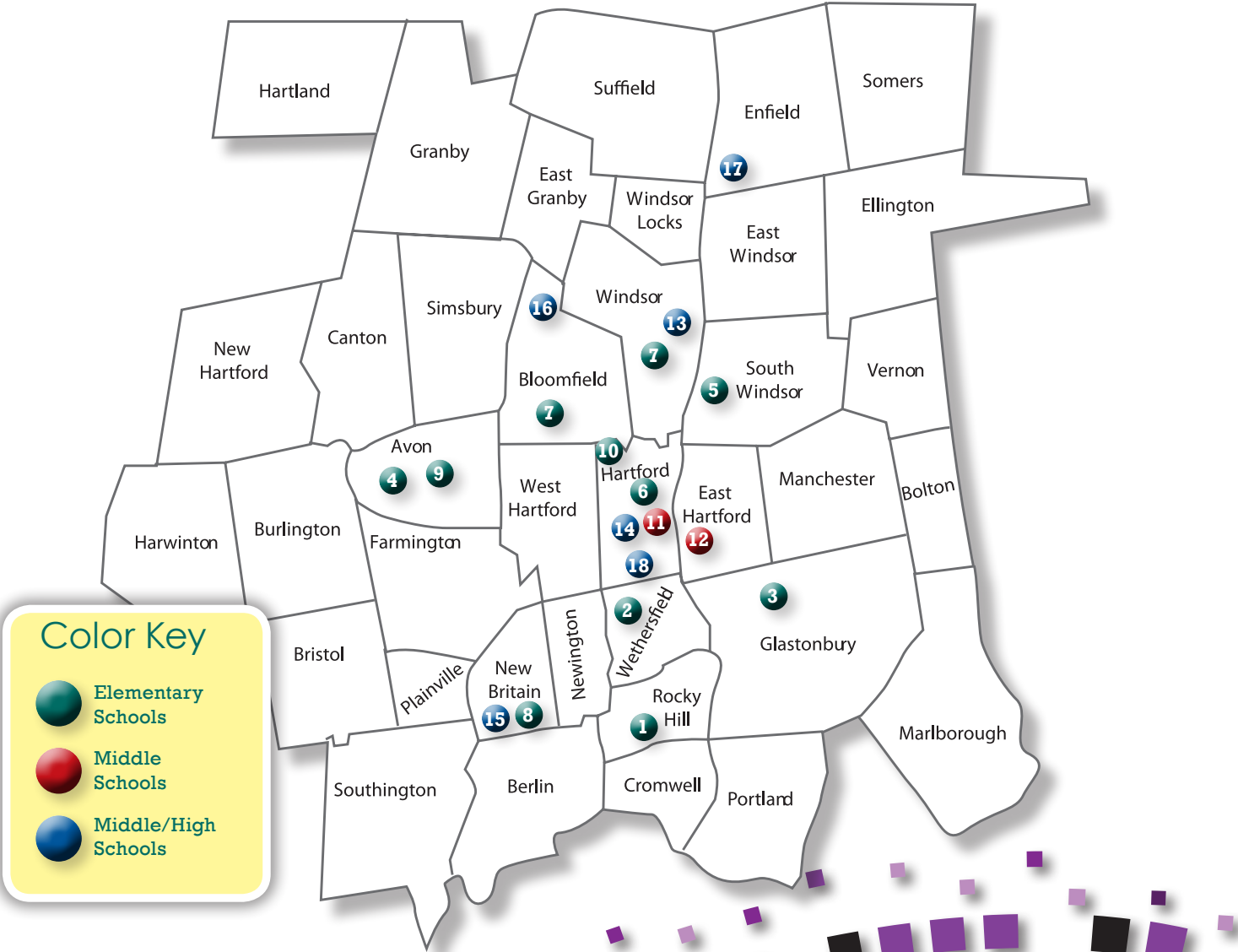
CREC Greater Hartford Academy of the Arts High School
(Half-Day and Full-Day Program, Grades 9 to 12)

Architect: Tai Soo Kim Partners
15 Vernon Street, Hartford, CT 06106
Architect: Maier Design Group
160-172 Huyshope Avenue, Hartford, CT 06106

Established 1985
Enrollment457
Total Enrollment 1,280
Square Footage 45,000

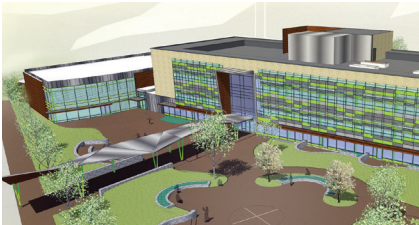


CREC Magnet Schools



CREC Magnet Schools

Pre-K and Elementary Magnet Schools



CREC Academy of Aerospace and Engineering Elementary School

(Pre-K to Grade 5)
Architect: Amenta Emma Architects
525 Brook Street, Rocky Hill, CT 06067

Permanent Location: TBD

Established	2013
Current Enrollment.....	297
Total Enrollment	704
Square Footage	101,470
Project Budget.....	\$61,572,181

CREC Discovery Academy

(Pre-K to Grade 5)
Architect: Amenta Emma Architects
176 Cumberland Avenue, Wethersfield, CT 06109

Established	2011
Current Enrollment.....	356
Total Enrollment	480
Square Footage	67,235
Project Budget.....	\$52,046,374



Glastonbury-East Hartford Elementary Magnet School

(Pre-K to Grade 5)
Architect: Fletcher Thompson
95 Oak Street, Glastonbury, CT 06033

Established	1992
Enrollment	436
Square Footage	93,206
Project Budget	\$29,724,252

CREC Ana Grace Academy of the Arts Elementary School

(Pre-K to Grade 5)
Architect: Amenta Emma Architects
20 Security Drive, Avon, CT 06001

Permanent Location: TBD

Established	2013
Current Enrollment.....	314
Total Enrollment	522
Square Footage	75,115
Project Budget	\$49,673,596

CREC International Magnet School for Global Citizenship

(Pre-K to Grade 5)
Architect: Perkins Eastman
625 Chapel Road, South Windsor, CT 06074

Established	2008
Enrollment	435
Square Footage	62,149
Project Budget	\$31,581,500



Pre-K and Elementary Magnet Schools



CREC Medical Professions and Teacher Preparation Academy

(Pre-K3 and K4 / Grades 6 to 12) See page 6.
Architect: Antinozzi Associates
600 Slater Road, New Britain, CT 06053

Established	2010
Enrollment	736
Square Footage	145,138
Project Budget.....	\$64,507,200

CREC Montessori Magnet School

(Pre-K to Grade 6)
Architect: Smith Edwards Architects
1460 Broad Street, Hartford, CT 06106

Established	1990
Enrollment	358
Square Footage	75,089
Project Budget.....	\$24,100,272

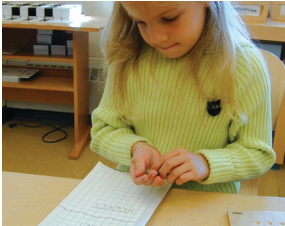
CREC Museum Academy

(Pre-K to Grade 5)
Architect: Smith Edwards Architects
(Pre-K & K) 206 West Newberry Road
Bloomfield, CT 06002

(Grades 1 to 5) 10 Univac Lane at
10 Targeting Center, Windsor, CT 06095

Permanent Location: August 2016
11 Turkey Hill Road, Bloomfield, CT 06002

Established	2008
Enrollment	458
Square Footage	72,701
Project Budget.....	\$55,327,963



CREC Reggio Magnet School of the Arts

(Pre-K to Grade 5)
Architect: Friar Associates
59 Waterville Road, Avon, CT 06001

Established	2008
Enrollment	450
Square Footage	64,120
Project Budget.....	\$32,987,694

CREC University of Hartford Magnet School

(Pre-K to Grade 5)
Architect: Smith Edwards Architects
196 Bloomfield Avenue, West Hartford, CT 06117

Established	2001
Enrollment	447
Square Footage	76,147
Project Budget.....	\$21,506,500

